

# ASTMH



AMERICAN SOCIETY OF TROPICAL MEDICINE & HYGIENE  
ADVANCING GLOBAL HEALTH SINCE 1903



## CLINICAL TROPICAL MEDICINE AND TRAVELERS' HEALTH: **Virtual Update Course**



**SEPTEMBER 23 – 25, 2021**



**THE 2021 UPDATE COURSE WILL BE LIVESTREAMED**

### Topics Include:

Arboviruses  
Cestodes  
Chagas  
CNS Lesions  
COVID-19  
Diarrheal Disease  
Ebola

Ectoparasites  
Eosinophilia  
Leshmania  
Malaria  
Nematodes  
NTD Roadmap  
Rickettsia

Snakebites  
Travel Medicine  
Trematodes  
Tropical Dermatology  
Tropical Fungal Infections  
Tuberculosis

The ASTMH Clinical Group  
(American Committee on Clinical Tropical Medicine and Travelers' Health)

[astmh.org](http://astmh.org)



# CLINICAL TROPICAL MEDICINE AND TRAVELERS' HEALTH

## Update Course

Designed for licensed physicians, nurses, nurse practitioners, physician assistants, veterinarians and other health professionals. Developed and presented by internationally recognized experts in the field of tropical medicine and travelers' health.

## Attend This Meeting if You:

1. Work in clinical tropical medicine and travelers' health and want to learn the most up-to-date science in the field.
2. Spent some of your professional time in clinical tropical medicine and travelers' health and are interested in obtaining an overview of the field.

## Objectives

1. Prepare patients for overseas travel to Low/Low-Middle Income Countries (LMICs).
2. Diagnose and treat patients who have become ill during overseas travel or are recently arrived immigrants and present with syndromes of fever and other pathologies.
3. Diagnose and treat individuals living in the tropics and subtropics who are ill.

## Benefit from This Course by:

1. Increasing your knowledge of patients' pre-travel needs.
2. Increased competence to diagnose and treat fever and illness in the returned traveler.
3. Increasing your knowledge of illness in endemic settings.

**“Cases are a great way to impart knowledge.”**

*-Course Participant 2020*

**“Virtual platform was great!”**

*-Course Participant 2020*



The Update Course draws an international audience, including attendees from:

Australia  
Belize  
Canada  
Chile  
Gabon  
Germany  
Indonesia  
Italy  
India  
Kenya  
Mexico  
Netherlands  
New Zealand  
Nigeria  
Qatar  
Saudi Arabia  
Singapore  
South Africa  
Spain  
Switzerland  
Ukraine  
United Kingdom

## Livestreamed Update Course Registration Fees

- Registration open now through September 15, 2021
- Attend online
- On-demand recordings available afterward at your convenience
- Access pre-recorded bonus sessions at your convenience

### Register today!

	2021 Fees
<b>ASTMH Member</b>	\$300
<b>Non-Member</b>	\$400
<b>Students/Trainees/Residents/Fellows</b>	\$175

## Course Agenda

(All times U.S. Eastern Time)

### Thursday, September 23

**6:30 p.m. – 6:45 p.m. EDT**

**Welcome and Introductions**

**6:45 p.m. – 7:30 p.m. EDT**

**Laboratory Diagnostics: Procedures, Identification and Interpretation**

Bobbi Pritt, MD, MSc, DTMH, FCAP\*  
*Mayo Clinic*

*Rochester, Minnesota, United States*

**7:30 p.m. – 8:15 p.m. EDT**

**Fever in a Returned Traveler**

Sapha Barkati, MD, MSc, DTM&H\*  
*McGill University*  
*Montreal, Quebec, Canada*

**8:15 p.m. – 9 p.m. EDT**

**Diarrheal Diseases: Travelers' Diarrhea, GI Protozoa and Typhoid fever**

Michael Libman, MD\*  
*McGill University*  
*Montreal, Quebec, Canada*

### Friday, September 24

**9:30 a.m. – 9:45 a.m. EDT**

**NTD Roadmap Preamble**

Aisha Khatib, MD, CCFP(EM), CTravMed, DTM&H\*  
*University of Toronto*  
*Toronto, Ontario, Canada*

**9:45 a.m. – 10:30 a.m. EDT**

**Nematodes and Trematodes: Soil Transmitted Helminths, Strongyloides and Schistosomiasis**

Siddhartha Mahanty, MBBS, MPH, FASTMH\*  
*Doherty Institute, University of Melbourne*  
*Melbourne, Australia*

**10:30 a.m. – 11:15 a.m. EDT**

**Rickettsiosis**

Lucas Blanton, MD\*  
*University of Texas Medical Branch*  
*Galveston, Texas, United States*

**11:15 a.m. – Noon EDT**

**Eosinophilia**

Elise O'Connell, MD\*  
*National Institute of Allergy and Infectious Diseases*  
*Bethesda, Maryland, United States*

**Noon – 12:15 p.m. EDT**

**Morning Break**

**12:15 p.m. – 1 p.m. EDT**

**Tuberculosis**

German Henostroza, MD\*  
*University of Alabama at Birmingham*  
*Birmingham, Alabama, United States*

**1 p.m. – 1:45 p.m. EDT**

**Tropical Dermatology**

Alexia P. Knapp, MD\*  
*HealthPartners Specialty Center*  
*Saint Paul, Minnesota, United States*

\* ASTMH Member





“Good update on diagnostic techniques and treatment.”

-Course Participant 2020

## Friday, September 24 (cont.)

**1:45 p.m. – 2:15 p.m. EDT**

### Lunch Break

**2:15 p.m. – 3 p.m. EDT**

### Travel Medicine: Pre-Travel Vaccines

Lin Chen, MD, FACP, FISTM, FASTMH\*  
Harvard Medical School  
Cambridge, Massachusetts,  
United States

**3 p.m. – 3:45 p.m. EDT**

### Malaria Update: Prophylaxis, Treatment, Vaccine

Anne McCarthy, MD, MSc, FRCPC,  
DTMH, FASTMH\*  
Ottawa Hospital Civic Campus  
Ottawa, Ontario, Canada

**3:45 p.m. – 4:30 p.m. EDT**

### Tropical Fungal Infections

Peter Pappas, MD  
University of Alabama at Birmingham  
Birmingham, Alabama, United States

**4:30 p.m. – 5 p.m. EDT**

### Review Questions Session I

**5 p.m. EDT**

### Course Adjourns

## Saturday, September 25

**9:30 a.m. EDT**

### Icebreaker: Climate Change

Aisha Khatib, MD, CCFP(EM), CTravMed,  
DTM&H\*

**9:45 a.m. – 10:30 a.m. EDT**

### Chagas Disease

Laila Woc-Colburn, MD, DTMH, FIDSA\*  
Emory University School of Medicine  
Atlanta, Georgia, United States

**10:30 a.m. – 11:15 a.m. EDT**

### Leishmania

Andrea K. Boggild, BSc, MSc, MD,  
DTMH, FRCPC\*  
Toronto General Hospital  
University of Toronto  
Toronto, Ontario, Canada

**11:15 a.m. – Noon EDT**

### Cestodes: Cystercercosis and Echinococcus

Christina Coyle, MD, MS\*  
Albert Einstein College of Medicine  
Bronx, New York, United States

**Noon – 12:15 p.m. EDT**

### Morning Break

**12:15 p.m. – 1 p.m. EDT**

### Outbreaks and Emerging Pathogens: COVID-19, Ebola, VHF

Daniel G. Bausch, MD, MPHTM, FASTMH\*  
ASTMH President-Elect  
FINN  
Geneva, Switzerland

**1 p.m. – 1:45 p.m. EDT**

### Arboviruses

Aileen Chang, MD, MSPH\*  
George Washington University School of  
Medicine  
Washington, DC, United States

**1:45 p.m. – 2:15 p.m. EDT**

### Lunch Break

**2:15 p.m. – 3 p.m. EDT**

### Sexually Transmitted Infections of the Tropics

Susan Tuddenham, MD, MPH  
Johns Hopkins University School of  
Medicine  
Baltimore, Maryland, United States

**3 p.m. – 3:45 p.m. EDT**

### Snakebites and Other Venomous Bites and Stings

David A. Warrell, DM, DSc, FRCP,  
FRCPE, FMedSci\*  
University of Oxford  
Oxford, United Kingdom

**3:45 p.m. – 4:30 p.m. EDT**

### Tropical Cases

Aisha Khatib, MD, CCFP(EM), CTravMed,  
DTM&H\*  
Siddhartha Mahanty, MBBS, MPH,  
FASTMH\*

**4:30 p.m. – 5 p.m. EDT**

### Review Questions Session 2

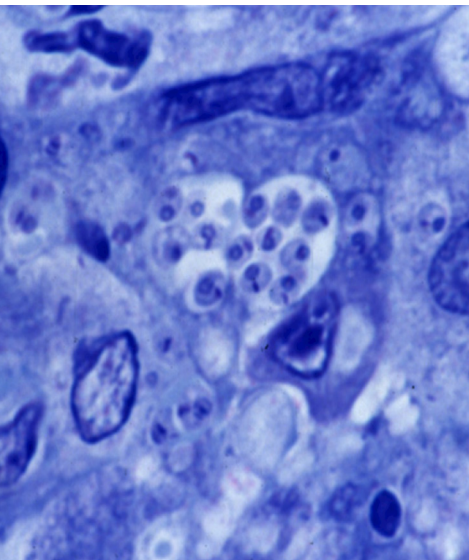
**5 p.m. – 5:15 p.m. EDT**

### Course Wrap-up

**5:15 p.m. EDT**

### Course Adjourns

\* ASTMH Member



## Bonus Sessions – Available on Demand

Registered attendees also receive access to four pre-recorded sessions from the following tropical medicine experts (available at the conclusion of the two-day course):

### **Altitude and High Risk Travel**

Jenny Visser, BSc, MB ChB, MTravMed, PGCertGP, FRNZCGP  
*University of Otago*  
*Wellington, New Zealand*

### **Migrant Health Primer**

Beverley-Ann Biggs, MBBS, PhD, FRCP, FRACP, FACTM  
*Doherty Institute, University of Melbourne*  
*Melbourne, Australia*

### **Marine, Plant and Fungal Toxins**

David A. Warrell, DM, DSc, FRCP, FRCPE, FMedSci\*  
*University of Oxford*  
*Oxford, United Kingdom*

### **Public Health in the Tropics: WASH, Maternal and Child Health**

Bijou Muhara, MPP  
*United States Agency for International Development (USAID)*  
*Ouagadougou, Burkino Faso and Washington, DC, United States*

## Accreditation

ASTMH is accredited by the Accreditation Council for Continuing Medical Education (ACCME) to provide continuing medical education for physicians. ASTMH designates this live educational activity for a maximum of 16.5 *AMA PRA Category 1 Credits™*. Physicians should claim only the credit commensurate with the extent of their participation in the activity. CME credit will be issued for presentations included in the live meeting, not the pre-recorded materials. A record of the credit will be sent to each registrant after the course.

## Physician Assistant Continuing Education Credit

AAPA accepts certificates of participation for educational activities certified for *AMA PRA Category 1 Credit™* from organizations accredited by ACCME or a recognized state medical society. Physician assistants may receive a maximum of 16.5 *AMA PRA Category 1 Credits™* for completing this program.



## Course Organizers



*Aisha Khatib*

**Aisha Khatib, MD, CCFP(EM), CTravMed, DTM&H**

University of Toronto  
ASTMH Clinical Group Councilor



*S. Mahanty*

**Siddhartha Mahanty, MBBS, MPH, FRACP**

University of Melbourne  
Member, ASTMH Clinical Group

## Faculty Affiliations



“The caliber and expertise of the speakers was excellent!”

-Course Participant 2020

Not a member of ASTMH or the Clinical Group?  
[Join Here](#)

## ASTMH Inclusion/Respect Statement

The ASTMH is an international society committed to equity and global impact through the treatment and prevention of tropical infectious diseases. Our diverse membership comes from more than 115 countries and engages with an enormous array of infectious diseases, cultures, ethnicities, and countries. We come from academia, research institutes, implementation programs, industry, multilateral organizations, foundations, and governments, gathering annually to exchange data, share learning, and honor contributions from the field and the lab.

As a Society, we are committed to the open exchange of ideas, freedom of thought and expression, and productive scientific debate that are central to our mission. These require an open and diverse environment that is built on dignity and mutual respect for all members, participants, and staff, free of discrimination based on personal attributes including but not limited to ethnicity, color, national origin, age, religion, socioeconomic status, disability, sexual orientation, gender, and gender identity or expression. We affirm the key principles of inclusion, diversity, and respect for all people. In a world of rich diversity, the advancement of science depends on the intellectual breadth and depth of a diverse ASTMH, one that informs and enriches the shape and content of scientific discourse. These principles guide the actions of ASTMH's leaders, members, and staff in advancing the goals of the Society.

“The session on emergency response was quite interesting.”

-Course Participant 2020

## Disclosure of Faculty's Commercial Relationships

Consistent with ASTMH policy, faculty are required to disclose any economic or other personal interests that create, or may be perceived as creating, a conflict of interest related to the material discussed. ASTMH resolves personal conflicts of interest. Faculty are required to disclose, at the beginning of their presentation, any product mentioned during their presentation that is not labeled for the use under discussion or is still investigational. This policy is intended to allow participants to form their own judgments about such material.

## Course Cancellations

For course cancellations, please send an email to [Buffy Finn](#), Manager, Membership, by September 3, 2021. Please include the reason for the cancellation.

## Payment

ASTMH accepts VISA, MasterCard, Discover and American Express.

Previous attendees have come from leading public and private sector stakeholders in tropical medicine and travelers' health:

African Field Epidemiology Network	Oregon Emergency Physicians
Albert Einstein College of Medicine	Ottawa Hospital Civic Campus
Baylor College of Medicine	Peace Corps Medical Office
Baylor Scott and White	Royal Hobart Hospital
Capital and Coast DHB	Sauk Prairie Healthcare
Case Western Reserve University	South Florida Infectious Disease and Tropical Medicine Center
Centers for Disease Control and Prevention	The Peter Doherty Institute for Infection and Immunity
Clarence Medical Centre	Tulane University
Clinical Pathology Associates	University of California San Diego
Department of Defense	UCLA Division of Infectious Diseases
ExxonMobil	University of North Carolina Chapel Hill
Gordon College	University of Otago
Harvard T.H. Chan School of Public Health	University of Texas Medical Branch
HealthPartners Medical Group	University of Toronto
Helen DeVos Children's Hospital	UT Southwestern Medical Center
John Peter Smith Hospital	Wake Forest University
Johns Hopkins University School of Medicine	Vanderbilt University Medical Center
Mayo Clinic	
McGill University Health Center	
National School of Tropical Medicine	
National Institutes of Health	





MARK YOUR CALENDAR!

## Virtual Clinical Pre-Meeting Course

November 11–12, 2021

**Topic: End the Neglect: A Clinico-Epidemiological Review and Update on Neglected Tropical Diseases and the Global Targets for 2030**

This Pre-Meeting Course precedes the 2021 Annual Meeting.

**REGISTRATION IS NOW OPEN!**

**Register Today!**

**American Society of  
Tropical Medicine and Hygiene**  
241 18th Street South, Suite 501  
Arlington, VA 22202 USA  
+1-571-351-5409  
Fax +1-571-351-5422  
bfinn@astmh.org  
astmh.org



@ASTMH

**#Courage #Compassion #Culture**

# 2021 Annual Meeting

GAYLORD NATIONAL RESORT AND CONVENTION CENTER  
NATIONAL HARBOR, MARYLAND, USA

**November 17–21, 2021**

astmh.org | ajtmh.org | #TropMed21 #IamTropMed



**ATTEND THE ANNUAL MEETING IN-PERSON.**

**Register Today!**