



The Emerging Role of Academic Universities in Global Health:

Duke Global Health Institute

Michael Merson, MD, Director

American Society of Tropical Medicine and Hygiene

December 9, 2008

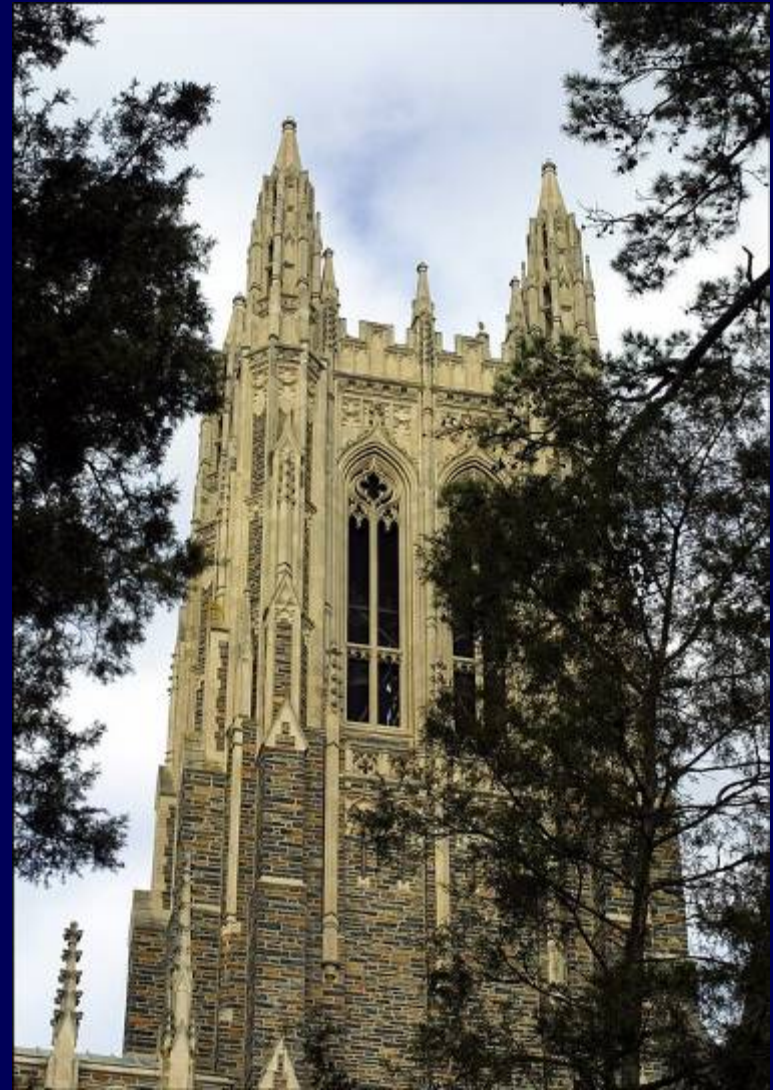
Global Health: A Part of the Duke Tradition



- The concept of global health is found in **James B. Duke's indenture of 1924** that established the university "to develop our resources, increase our wisdom, and promote human happiness."
- Incorporated in research and training in **Duke Medicine**

Some Duke University Strengths

- Middle-sized compact university with strong interdisciplinary ethos
- International leadership in selected areas: *100 faculty in 50 countries*
- New educational initiatives
- Service-abroad learning programs



Duke Global Health: From Initiative to Institute

- Interdisciplinary Steering Committee formalized Duke's involvement in global health issues and defined the mission of the Global Health Initiative
 - “reduce **health disparities**”
 - “in our **local** community and **worldwide**”
 - “**interdisciplinary** teams”
 - “**solve** highly complex problems and **train** the next generation.”
- The Steering Committee recommended the establishment of an Institute that “**truly spans the humanities, social sciences, engineering, environment, law and divinity, as well as the life sciences.**”

Why Create a Global Health Institute?



- Coordinate existing institutional strengths in Global Health
- Fill education and research gaps and pursue newly arising opportunities
- Project Duke as a Global Health leader nationally and internationally
- Mobilize necessary human and financial resources

Why Has GH Become So Popular on University Campuses?

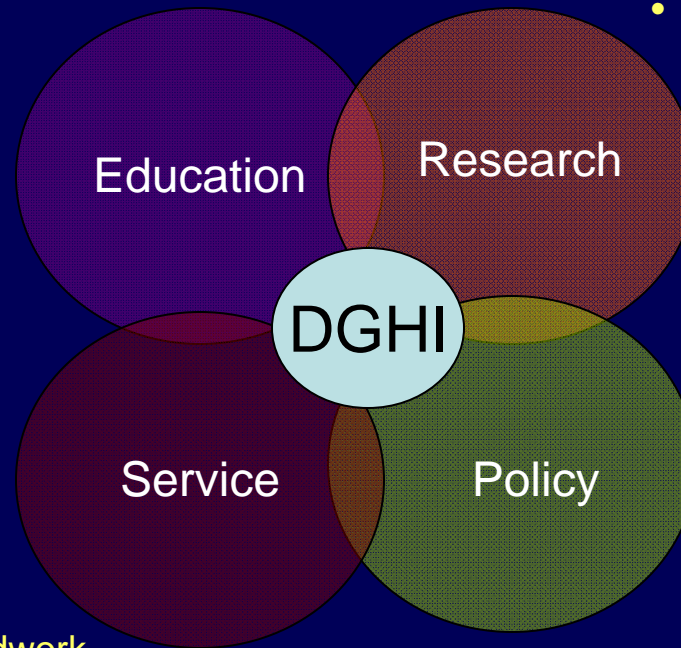
- Response to 9/11 and Iraq conflict
- Pandemics in the news: SARS, AIDS, Avian Flu, etc.
- Information technology boom
- Philanthropy: Gates and other foundations
- Influence of media and “rock stars”: Bono et al.
- Social justice: Access to medications
- Involvement of faculty from many disciplines
- *A young generation with “unconsummated desire for sacrifice and service”*

DGHI Strategic Goals

- Build the **next generation of GH scholars**
- Encourage innovation and promote excellence in **GH research**
- Respond to the **policy needs** of decision makers
- Undertake **service and service-learning** in GH
- Facilitate **access to current information** on GH

DGHI in Action

- Undergraduate Focus Cluster
- GH Certificate
- M.Sc. In GH
- Doctoral Program
- Postdoctoral Program
- MD 3rd Year Global Health Study Program
- GH Residency Program
- Student Fieldwork Grants
- International programs



- Signature Research Initiatives:
 - Obesity and CVD
 - Global Aging
 - Global Environmental Health
 - Gender, Poverty and Health
 - Emerging Infectious Diseases
 - Health Systems Strengthening

- Domestic and international fieldwork opportunities for students and faculty
- International sites for research and education
- GH P.L.U.S. program (Surplus medical equipment)
- Access to information on GH

- Center for Health Policy
- Monitoring & Evaluation Unit
- Policy Unit to support decision-making related to GH

Education Initiatives

- **Global Health Certificate**
 - 81 students enrolled
- **Master of Science in Global Health**
 - First cohort will matriculate in Fall 2009
- **MD 3rd Year Global Health Study Program**
 - 4 students enrolled, inaugural year
- **Global Health Residency**
 - 4 residents from 4 departments, inaugural year
- **International Partnerships**
 - St. Petersburg, Delhi, Shanghai, Beijing

Signature Research Initiatives

- Cardiovascular Disease and Obesity
- Global Aging
- Global Environmental Health
- Emerging Infectious Diseases
- Gender, Poverty, and Health
- Health Systems Strengthening

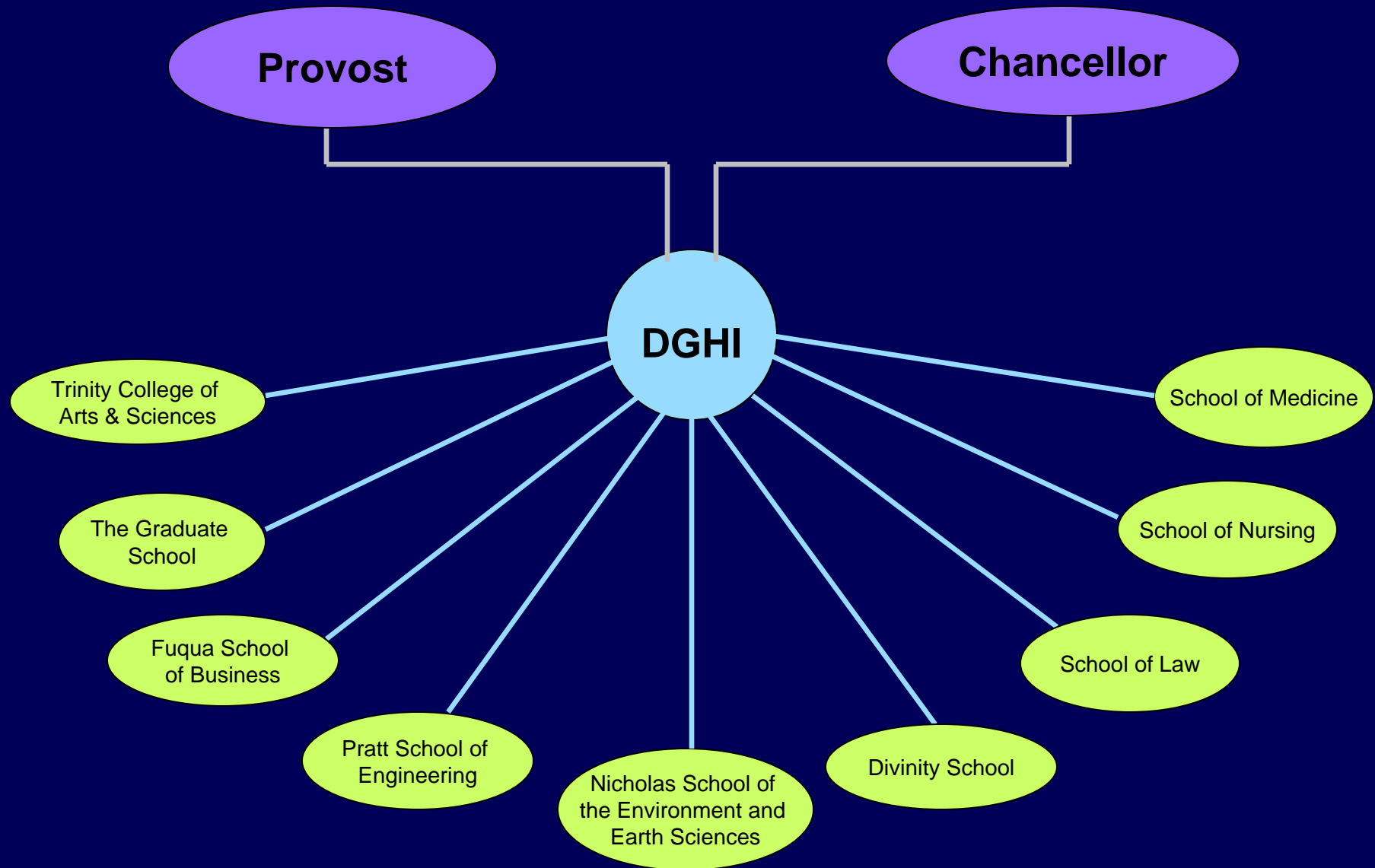
Where DGHI is Working



Institutional Partners

- Center for Health Policy
- Duke Human Vaccine Institute
- Engineering World Health
- Engineers Without Borders
- Hubert-Yeargan Center for Global Health
- Office of Global and Community Health Initiatives, School of Nursing
- Program on GH and Technology Access

How DGHI Relates to the University



DGHI Governance

- Members
- Affiliates
- Executive Committee
- Deans' Council
- Student Council
- Board of Advisors

DGHI was granted authority to appoint regular, non-tenure track faculty.

Priorities

- Consolidating educational programs
- Expanding research activities
- Developing DGHI's international sites
- Faculty recruitment
- Creating a sustainable business model
- Coping with the economic downturn
- Internationalizing Duke University

How can the field of tropical medicine best relate to global health?

- Commitment to reducing health disparities
- Expertise in emerging infections and neglected diseases
- Knowledge of and experience working in low- and middle-income countries
- Contribute to education, research, and service

Why has Duke made such a substantial commitment to global health and how can we encourage other universities to do so?

- Consistent with the strategic plan for Duke University: “Making a Difference”
- Service to society ethos
- Commitment to interdisciplinary scholarship across the university
- Student enthusiasm and support from top leadership of the university
- Willingness to share experience (UCGH)

What are some of the ethical issues you have encountered in global partnerships?

- Balancing research objectives with building local capacity
- Role and placement of students
 - Careful consideration of benefit vs. harm for both students and host institutions
 - Are students adequately prepared?
- Analysis and dissemination of results
- IRB clearance locally and at own institution