



AMERICAN SOCIETY OF TROPICAL MEDICINE & HYGIENE
ADVANCING GLOBAL HEALTH SINCE 1903

SIXTY-SEVENTH

ANNUAL MEETING

Sheraton New Orleans and New Orleans Marriott | New Orleans, LA USA

October 28 – November 1, 2018

MEETING & REGISTRATION INFORMATION

“There will be epidemics...”

EBOLA: WORLD GOES ON RED ALERT

-2014

**Six Dead, 17 Sick From
Drug-Resistant TB**

-2017

Spread of Spanish Flu Menaces War Production

-1918

**Charity to Help Fight
Malaria in Africa**

-2010

Ebola Out of Control

-2014

**Success in Tests of Yellow
Fever Serum Reported**

-1932

**Dengue Dengue
EVERYWHERE**

-2017

**ASTMH Annual Meeting
Canceled Due to
Spanish Flu Outbreak**

-1918

**FDA Busts Fake
Malaria Medicines**

-2013

African Countries to Plot New Malaria Vaccine

-2017

**ZIKA THREAT
ON OUR
DOORSTEP**

-2016

**An American
Plague:
Yellow Fever
Epidemic of 1793**

-2005

**Island Declares State of Emergency
Over Zika Virus, Dengue Fever Outbreak**

-2016

**Brace for
Dengue**

-2017

Zika Spreads Worldwide

-2016

**DIPHTHERIA:
Why Is It Back?**

-2017

**New Hope
for AIDS Drug**

-1996

**Malaria Cases
on the Rise
in Last 3 Years**

-2016

**QUARANTINE WANTED
as Yellow Fever Spreads**

-1878

**Officials: Texas Sees Growing
Number of Typhus Cases**

-2017

**Death Toll Growing as Influenza
Claims Many Score Victims**

-1918

**Cholera Epidemic
in Yemen Now
Affects One
Million People**

-2017

**Been to an Ebola-affected country?
Stay away from ASTMH meeting, Louisiana says**

-2014

**Panic as
1,500
Die of
Malaria**

-1988

ANNUAL MEETING

Dear Colleagues:

I am delighted to invite you to the 2018 ASTMH Annual Meeting in New Orleans for several days of sharing results of world-class research, clinical updates and topical discussions with the brightest scientific experts and thought leaders in tropical medicine and global health. This year we are pleased to welcome Dr. Matshidiso Moeti, WHO Regional Director for Africa, as our opening keynote speaker. Dr. Moeti is sure to provide valuable insights into the dynamic global health situation in Africa, including, among others, the response to the Ebola virus outbreak in the Democratic Republic of the Congo.

Speaking of outbreaks, we also note that this year is the 100th anniversary of the 1918 "Spanish flu" pandemic. We'll be marking the occasion with an expanded program on outbreaks, including a special Tuesday evening panel session with global leaders who manage outbreak response and an exhibit sponsored by the Smithsonian Institute illustrating the scientific and cultural impact of epidemics.

Outbreaks, malaria or helminths, it's all here. Catch up with colleagues, discuss your recent findings, get inspired for a next project, refuel with your circle of collaborators, mentors and friends at TropMed18 and, of course, *laissez les bons temps rouler* in New Orleans.

Look forward to seeing you at ASTMH,

Chers collègues,

J'ai le plaisir de vous inviter à la Réunion Annuelle 2018 de l'ASTMH à la Nouvelle-Orléans afin de passer plusieurs jours de partage de résultats de recherche, d'avancées cliniques et de discussions d'actualités scientifiques avec les meilleurs experts scientifiques en médecine tropicale et santé globale. Cette année, nous avons le plaisir d'accueillir le Dr Matshidiso Moeti, Directeur Régional de l'OMS pour l'Afrique, en tant que conférencière d'ouverture. Dr Moeti nous fournira très certainement des informations importantes sur la situation sanitaire globale en Afrique, qui évolue de manière très dynamique, y compris, entre autres, la réponse à l'épidémie de maladie à virus Ebola en République Démocratique du Congo.

En parlant d'épidémies, nous notons également que cette année est le centenaire de la pandémie de "grippe espagnole" de 1918. Nous allons marquer l'occasion avec un programme élargi sur les épidémies, y compris une session spéciale du mardi soir avec les leaders mondiaux de gestion de riposte épidémique, ainsi qu'une exposition parrainée par l'Institute Smithsonian afin d'illustrer l'impact scientifique et culturel des épidémies.

Les épidémies, le paludisme ou les helminthes, tout est là. Rencontrez des collègues, discutez de vos découvertes récentes, inspirez-vous pour un prochain projet, faites le plein d'énergie avec votre cercle de collaborateurs, de mentors et d'amis à TropMed18, et bien sûr, « laissez les bons temps rouler » à la Nouvelle-Orléans.

Au plaisir de vous voir à ASTMH,

Estimados Colegas,

Estoy encantado de invitarlos a la Reunión Anual ASTMH 2018 en Nueva Orleans para varios días de compartiendo resultados de investigaciones de clase mundial, actualizaciones clínicas y discusiones tópicas con expertos científicos y líderes de opinión en medicina tropical y salud global. Este año nos complace dar la bienvenida a la Dr. Matshidiso Moeti, Directora Regional de la OMS para África, como nuestro orador principal de apertura. La Dr. Moeti seguramente brindará información valiosa sobre la dinámica situación de la salud global en África, incluida, entre otras, la respuesta al brote del virus del Ébola en la República Democrática del Congo.

Hablando de brotes, también notamos que este año es el 100 aniversario de la pandemia de la "gripe española" de 1918. Marcaremos la ocasión con un programa expandido sobre los brotes, que incluye una sesión especial del panel por la tarde del martes con los líderes mundiales que gestionan la respuesta al brote y una exhibición patrocinada por el Instituto Smithsonian que ilustra el impacto científico y cultural de las epidemias.

Brotes, malaria o helmintos, lo tiene todo. Póngase al día con sus colegas, discuta sus hallazgos recientes, inspírese para un próximo proyecto, recargue energías con su círculo de colaboradores, mentores y amigos en TropMed18, y, por supuesto, "laissez les bons temps rouler" en Nueva Orleans.

Espero verle en Nueva Orleans,



Daniel Bausch

**Daniel G. Bausch, MD,
MPH&TM, FASTMH**
Scientific Program Chair



Regina

Regina Rabinovich, MD
President



Karen A. Goralleski

Karen A. Goralleski
Executive Director

ANNUAL MEETING



The Annual Meeting is a five-day educational conference that includes four pre-meeting courses and regularly draws over 4,500 attendees.

Annual Meeting Features

- Scientific sessions devoted to specific topics in tropical medicine and global health
- Scientific poster presentations
- Topical symposia and invited lectures
- Opening reception on Sunday evening
- President's Address, Awards Program and Business Meeting
- Exhibits showcasing tropical medicine and global health products and services
- Student/trainee networking
- Continuing education credits for physicians, physician assistants and veterinarians

Table of Contents

- 6 Keynote Address
- 8 For Students/Trainees

Pre-Meeting Courses

- 12 **Clinical Pre-Meeting Course:**
Tropical Dermatology
- 17 **Parasitology Pre-Meeting Course:**
Big Data and Genomics –
A Practical Workshop on
Sequence Analysis in Parasitology
- 20 **Global Health Pre-Meeting Course:**
The Global Health Impact of Urbanization
and Megacities – Trends, Risk Management
and Research Needs
- 24 **Medical Entomology Pre-Meeting Course:**
Vector-Borne Disease Risk and Prevention
for the Clinician
- 27 Invited Lectures
- 31 Registration Information
- 34 Continuing Education Credit
- 35 Schedule-at-a-Glance
- 38 Travel Information
- 39 Hotel Information
- 40 Request for Meeting Space
- 40 Photography
- 40 Exhibit and Sponsorship Information

[Membership Application](#)

Who We Are

The American Society of Tropical Medicine and Hygiene, founded in 1903, is the largest international scientific organization of experts dedicated to reducing the worldwide burden of tropical infectious diseases and improving global health.

What We Do

We accomplish this through generating and sharing scientific evidence, informing health policies and practices, fostering career development, recognizing excellence and advocating for investment in tropical medicine/global health research.

ASTMH ACKNOWLEDGES OUR AFFILIATE MEMBER:

PATRON

Peter Melby

University of Texas Medical Branch



ANNUAL MEETING



ABOUT THE ANNUAL MEETING

Attend This Meeting if You:

- Work in tropical medicine, hygiene and global health and want to learn the most up-to-date science in the field
- Spend a portion of your professional time in tropical medicine, hygiene or global health and are interested in obtaining an overview of the field

Benefit From This Meeting by:

- Increasing your knowledge base for tropical diseases
- Increasing your scientific knowledge of tropical diseases and pathogens
- Increasing your knowledge base with respect to the latest scientific advances in tropical medicine and hygiene
- Increasing your knowledge of global health strategies
- Visiting exhibits on products and services for the field
- Connecting with old friends and making new connections that will serve you throughout your career

Meeting Objectives

- Identify, evaluate and differentiate various tropical diseases
- Apply current prophylactic and treatment options for tropical diseases
- Explain the basic science background of tropical medicine
- Summarize current research in tropical medicine, hygiene and global health
- Summarize issues relating to the management of dilemmas and emerging issues in tropical medicine and global health

“This meeting has something for everyone.”

~2017 Attendee

We are TropMed

WHO ATTENDS THE ASTMH ANNUAL MEETING?



The ASTMH Annual Meeting draws tropical medicine and global health professionals representing academia, government, non-profits, philanthropy, NGOs, industry, military and private practice. The meeting is designed for researchers, professors, government and public health officials, military personnel, travel clinic physicians, practicing physicians in tropical medicine, students and all healthcare providers working in the fields of tropical medicine, hygiene and global health.



#TropMed18



ANNUAL MEETING

Back by
popular
demand

ALL REGISTRATIONS INCLUDE

Free Wi-Fi for All Attendees

Your ASTMH registration fee includes Wi-Fi access throughout the registration area and meeting rooms of the Sheraton New Orleans and New Orleans Marriott. **Use Wi-Fi to download the ASTMH meeting app from the Apple Store or Google Play** (Wi-Fi is not needed to view the app or access content).

Meeting App

Approximately one month prior to the Annual Meeting, registered attendees can download the meeting app for easy access to all ASTMH program information. Use the app to view the meeting schedule, session and presenter information, full abstracts, exhibitors, maps and the Twitter feed.

Session Audio Recordings

Registrants will have free access to audio recordings and slides within 48 hours of each session.

“Excellent virology content and great stuff in the ACAV sessions.”

~2017 Attendee



ANNUAL MEETING

KEYNOTE ADDRESS

Sunday, October 28, 2018, 5:30 p.m.



Matshidiso R. Moeti, MBBS, MSc (CHDC), FLSHTM, DSc

WHO Regional Director for Africa

Regional Office for Africa

Brazzaville, Congo

Dr. Matshidiso Moeti is the first woman WHO Regional Director for Africa. She is leading health transformation in the African Region through a transformation agenda that is building a responsive, effective and results-driven regional secretariat that is advancing efforts toward universal health coverage, accelerating progress toward global development goals, and tackling emerging threats. Strong partnerships will underpin every aspect of the Regional Office's work during her tenure.

Dr. Moeti is a public health veteran, with more than 35 years of national and international experience. She joined the WHO Regional Office for Africa in 1999 and has held several senior positions in the organization, including Deputy Regional Director, Assistant Regional Director, Director of Noncommunicable Diseases, WHO Representative to Malawi, and Coordinator of the Inter-Country Support Team for Eastern and Southern Africa.

At the height of the HIV/AIDS epidemic, Dr. Moeti led WHO's "3 by 5" Initiative in the African Region, an Initiative that helped establish systems for the provision of antiretroviral therapy in countries and resulted in a significant increase in the number of HIV-positive individuals accessing antiretroviral drugs.

Under her leadership as Regional Director, the Regional Committee for Africa in 2016 adopted the Framework for Implementing the Global Technical Strategy for Malaria 2016-2030 in the African Region.

Prior to joining WHO, Dr. Moeti worked with UNAIDS as the Team Leader of the Africa and Middle East Desk in Geneva, with UNICEF as a Regional Advisor, and with Botswana's Ministry of Health in various capacities.

Dr. Moeti qualified in medicine (MB, BS) and public health (MSc in Community Health for Developing Countries) at the Royal Free Hospital School of Medicine, University of London in 1978 and the London School of Hygiene and Tropical Medicine in 1987, respectively.



ANNUAL MEETING

ALAN J. MAGILL MALARIA ERADICATION SYMPOSIUM



Alan J. Magill

ASTMH is proud to hold this symposium, now in its third year and created in memory of ASTMH Past President Alan J. Magill. Supported by the Bill & Melinda Gates Foundation, this session will honor Alan's life work in malaria and his contributions to advancing prospects for eradication.

This year the symposium will focus on surveillance, a key pillar of the WHO Global Strategy for Malaria 2016-30. Surveillance generates the data for how we measure progress, understand patterns of transmission, identify risk areas for focused response, provides the evidence for elimination, and serves as the basis for planning the response needed to ensure that global goals are attained. Additional details regarding the symposium schedule and speaker presentations will be available in late September via the Online Program Planner and in October in the meeting app.

Malaria Delenda Est!

ASTMH thanks the following...

SPONSORS (to date)

Bill & Melinda Gates Foundation

Takeda Pharmaceuticals International AG

Sandoz AG

Celgene Corporation

TECHLAB Inc.

Indiana University Ryan White Center for Pediatric Infectious Diseases & Global Health

BEI Resources

Sanofi Pasteur

PLOS

Elsevier

SUPPORTERS (to-date)

Burroughs Wellcome Fund

Thermosurgery Inc.

International Association for Medical Assistance to Travellers (IAMAT)

Vulcan Inc.

DONORS (to-date)

Dr. Ann E. Petri and the late William A. Petri, Sr.

The Petri Family

Michael Gottlieb, PhD

Thomas C. Greene, Jr.

Joel Moss, MD, PhD

LEADER

LEADER

PARTNER

CONTRIBUTOR

CONTRIBUTOR

CONTRIBUTOR

CONTRIBUTOR

FRIEND

ANNUAL MEETING

\$45 Local Student/Trainee One-Day Rate ONE DAY ONLY –

Students from the following states are eligible for the student one-day registration rate: Arkansas, Louisiana, Mississippi, Oklahoma, Texas



BEWARE!

Housing scam alert!

See page 39 for information on unauthorized third parties offering hotel rooms to obtain your credit card information.

ACTIVITIES FOR STUDENTS/TRAINEES AND CAREER DEVELOPMENT SESSIONS

\$45 Special One-Day Registration Discount For Local Students and Trainees

(Arkansas, Louisiana, Mississippi, Oklahoma, Texas)

ASTMH is pleased to offer a special one-day registration fee of \$45 for local students and trainees who have an interest in tropical medicine and global health but can only attend one day of the Annual Meeting. This radically reduced fee is designed for students and trainees from the following states ONLY: Arkansas, Louisiana, Mississippi, Oklahoma, Texas. You must submit a valid student ID card with your registration. Students may either pre-register or register onsite to take advantage of this discount. Limited to a one-day purchase. Multiple one-day purchases are not eligible.

Please note that this discounted rate does not apply to the pre-meeting courses. All students pay the full student registration fee for the pre-meeting courses.

ASTMH is pleased to offer the following opportunities for the next generation of leaders in tropical medicine, hygiene and global health:

- Young Investigator Competition and Awards (page 9)
- Elsevier Clinical Research Competition and Awards (page 9)
- First-Time Attendee Orientation Session (page 9)
- Student Reception
- The TropStop Student/Trainee Lounge
- TropStop Office Hours – Watch for more details
- Meet the Professors Sessions (page 9)
- Speed-Networking Session (Limited space, pre-registrants only)
- ASTMH Committee on Global Health (ACGH) Symposium II: Building a Successful Career in Global Health – An Interactive Session with Global Health Experts – Watch for more details

CONGRATULATIONS

2017 ASTMH/BMGF Travel Award winners!



ANNUAL MEETING



“The world’s thought
and action leaders
were in attendance
AND ACCESSIBLE!”

~2017 Attendee

First-Time Attendee Orientation: Point of Entry

Sunday, October 28

2:30 p.m. – 3:30 p.m.

Are you new to the ASTMH Annual Meeting and want to get the lay of the land? Don't miss our Point of Entry session on Sunday afternoon. ASTMH staff will orient new attendees to the schedule, session structure and highlights of the Annual Meeting. Meet others attending the conference for the first time and expand your professional network while learning the ins and outs of the meeting.

Young Investigator Award Competition

Sunday, October 28, 10 a.m. – 3 p.m.

Sponsored by TECHLAB Inc. and PLOS

Supported by Dr. Ann E. Petri and the late William A. Petri, Sr., The Petri Family, Michael Gottlieb, PhD, Thomas C. Green, Jr., and Joel Moss, MD, PhD

Young Investigator Award competition sessions are open to all meeting attendees. A list of applicants and the presentation schedule will be included in the Program Book. Support these young scientists in the tropical medicine and hygiene field as they share reports about their research and projects.

Elsevier Clinical Research Award Competition

Sunday, October 28, Noon – 2:30 p.m.

ASTMH gratefully acknowledges the support of Elsevier Health Sciences for its support of this award. The Elsevier Clinical Research Award competition sessions are open to all meeting attendees. The award recognizes excellence in clinical research presented by a student at the Annual Meeting. A list of applicants and the presentation schedule will be included in the Program Book and meeting app.

TropStop — The Student/Trainee Lounge

Monday, Tuesday and Wednesday

Sponsored by Indiana University Ryan White Center for Pediatric Infectious Diseases & Global Health

ASTMH is pleased to offer a designated area for conversation and networking with other young colleagues. Students/trainees are encouraged to visit the TropStop, meet other students/junior investigators and catch up with friends and colleagues.

Meet and Talk with Professionals in the Field

The TropStop schedule will include a daily one-hour afternoon session to meet professionals in the fields of tropical medicine and global health who will share career advice and answer any questions you have.

Meet the Professors Sessions

Monday, Tuesday and Wednesday, 12:15 p.m. – 1:30 p.m.

Students and trainees are especially encouraged to attend these interactive sessions, which are open to all meeting attendees. The speakers will present a clinical case of a tropical disease specific to a particular region that they have found a challenge to manage or diagnose.

ANNUAL MEETING

FOLLOW ASTMH ON SOCIAL MEDIA AT THE MEETING

Don't miss out on the latest meeting updates and timely news!

“A scientific event not to miss — it was worth the 17-hour flight.”

~2017 Attendee



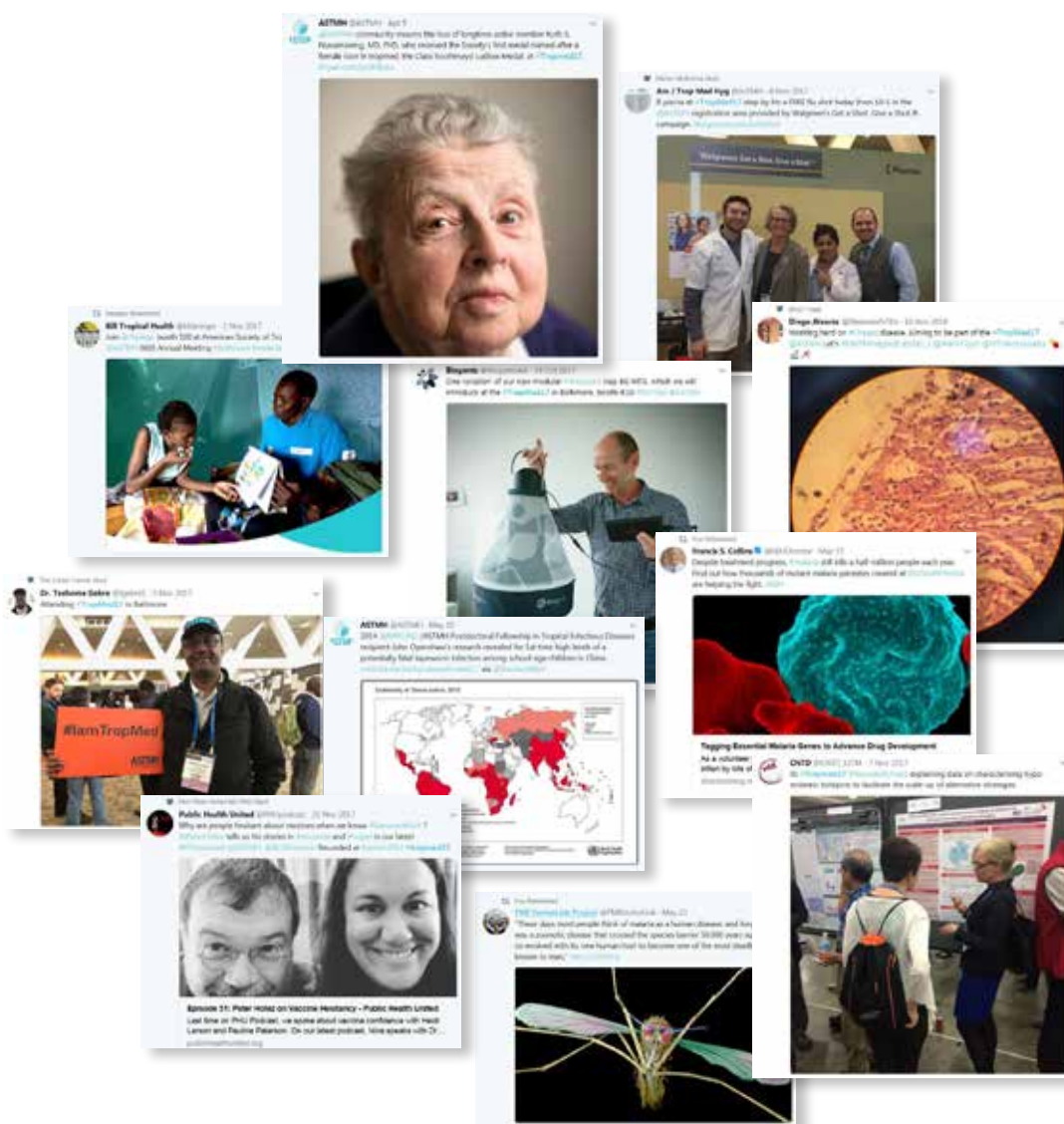
Subscribe to the ASTMH Facebook page for updates from the Annual Meeting and for relevant content year round.



Follow **@ASTMH**. During the conference, follow what your colleagues are saying with the **#TropMed18** hashtag. Add the Twitter application to your smartphone and get your updates in real time!



Enjoy classic video interviews of pioneers in the field, such as William Reeves, Calista and Ottis Causey, Thomas Weller and Jordi Casals.



ANNUAL MEETING

#IamTropMed

Show your support for tropical medicine, hygiene and global health! Share a photo from the meeting using the hashtag

#IamTropMed to your Twitter account.

Not able to attend? Post a photo from your lab or the field.



“New ideas on technologies, scientific collaboration and equipment for diagnostic and research.”

~2017 Attendee

ANNUAL MEETING

PRE-MEETING COURSES



Clinical Pre-Meeting Course:

TROPICAL DERMATOLOGY

Parasitology Pre-Meeting Course:

BIG DATA AND GENOMICS – A PRACTICAL WORKSHOP ON SEQUENCE ANALYSIS IN PARASITOLOGY

Global Health Pre-Meeting Course:

THE GLOBAL HEALTH IMPACT OF URBANIZATION AND MEGACITIES – TRENDS, RISK MANAGEMENT AND RESEARCH NEEDS

Medical Entomology Pre-Meeting Course:

VECTOR-BORNE DISEASE RISK AND PREVENTION FOR THE CLINICIAN



Clinical (ACCTMTH – Clinical Group) Pre-Meeting Course:

TROPICAL DERMATOLOGY

Supported by Thermosurgery Inc.

Saturday, October 27

Noon – 5 p.m.

Sunday, October 28

7 a.m. – 4 p.m.

This 1.5-day course offers an overview of Tropical Dermatology, an essential component of tropical medicine. The course is designed for clinicians who are already familiar with clinical tropical medicine, either from working in tropical environments or from seeing patients returning from the tropics. Saturday's session is devoted to cutaneous leishmaniasis (the latest in the rapidly changing epidemiology, diagnosis, management). Skin conditions will be reviewed from the standpoint of diagnosing and treating individual patients – and from managing skin diseases on a population basis. This course will use several didactic methods, including lectures, lively Jeopardy-style presentations, panel discussions, hands-on practice with methods to treat cutaneous leishmaniasis, and opportunities to view pathogens and skin diseases under microscopy. The target audience includes clinicians who want to develop a deeper understanding of cutaneous leishmaniasis and other skin diseases found in the tropics, and expand their knowledge and skills needed to provide optimal care for this population.

Course Objectives

- Summarize the management of cutaneous leishmaniasis and other skin diseases found in the tropics
- Discuss the issues related to managing tropical skin conditions on a population basis
- Describe the common or serious skin diseases found in mobile populations

Target Audience

The target audience includes clinicians who want to develop a deeper understanding of cutaneous leishmaniasis and other skin diseases found in the tropics, and expand their knowledge and skills needed to provide optimal care for this population.

ANNUAL MEETING



“I look forward to the interactive exhibits each year – they’re one of my favorite parts of ASTMH!”

~2017 Attendee

Attend this course if you:

- Seek education on recent developments in the epidemiology, diagnosis and management of leishmaniasis and other skin conditions found in the tropics
- Need guidance on the issues related to managing tropical skin conditions across segments of a population
- Seek up-to-date information on diseases that are likely to be seen among mobile individuals and populations

Benefit from this course by:

- Increasing your competence to provide optimal care for patients with cutaneous leishmaniasis and other skin diseases found in tropical environments
- Increasing your ability to manage skin conditions found in the tropics on a population basis
- Improving your skills to diagnose and treat or refer patients with new or unfamiliar skin conditions

Clinical Pre-Meeting Course Agenda

Saturday, October 27

Noon	Introduction – Course Scope and Goals <i>Naomi Aronson, MD</i> <i>Scott Norton, MD, MPH, MSc</i>
12:15 p.m.	Changes in the Epidemiology of Cutaneous Leishmaniasis <i>Peter Hotez, MD, PhD, FASTMH</i>
12:45 p.m.	Jeopardy I: Leishmaniasis and Its Mimics <i>Naomi Aronson, MD</i> <i>Scott Norton, MD, MPH, MSc</i> <i>Karolyn Wanat, MD</i>
1:30 p.m.	Diagnosis of Cutaneous Leishmaniasis <i>Andrea Boggild, BSc, MSc, MD, FRCPC</i>
2 p.m.	Management of Old World Cutaneous Leishmaniasis <i>Pierre Buffet, MD, PhD</i>
2:45 p.m.	Thermo/Cryotherapy Demonstration (extends into break) <i>Naomi Aronson, MD</i> <i>Pierre Buffet, MD, PhD</i> <i>Scott Norton, MD, MPH, MSc</i>
3 p.m.	Coffee Break
3:15 p.m.	Management of New World Cutaneous Leishmaniasis <i>Naomi Aronson, MD</i>
3:45 p.m.	Mucosal Leishmaniasis: Pathology and Immunology Guide Management <i>Edgar Carvalho, MD, PhD</i>
4:15 p.m.	The Future of Global Treatment of Cutaneous Leishmaniasis <i>Byron Arana, MD, PhD</i>
4:45 p.m.	Questions and Panel Discussion <i>Byron Arana, MD, PhD, Naomi Aronson, MD, Andrea Boggild, BSc, MSc, MD, FRCPC, Pierre Buffet, MD, PhD, Edgar Carvalho, MD, PhD, Peter Hotez, MD, PhD, FASTMH</i>
5 p.m.	Attendee Reception

ANNUAL MEETING



“I was pleased to see some of the less-represented topics.”

~2017 Attendee

Clinical Pre-Meeting Course Agenda (cont.)

Sunday, October 28

7 a.m.	Networking Breakfast
8 a.m.	Introduction to Tropical Dermatology <i>Scott Norton, MD, MPH, MSc</i>
8:15 a.m.	Sentinel Presentations of Reportable Diseases <i>Karolyn Wanat, MD</i>
9 a.m.	Skin Conditions Among Refugees, Migrants and Adoptees <i>Alexia Knapp, MD</i>
9:30 a.m.	Jeopardy II: Drugs, Bugs, Lumps and Bumps <i>Aileen Chang, MD</i> <i>L. Claire Fuller, MBBS</i> <i>Wingfield Rehmus, MD, MPH</i> <i>Karolyn Wanat, MD</i>
10:30 a.m.	Coffee Break
10:45 a.m.	HIV Dermatology <i>Esther Freeman, MD, PhD</i>
11:15 a.m.	Dermatologic Diseases Associated with Environmental Changes and Natural Disasters <i>Justin Bandino, MD</i>
11:45 a.m.	Dermatologic Formulary and Diagnostics in Resource Poor Settings <i>Scott Norton, MD, MPH, MSc</i>
12:15 p.m.	Lunch on your own Demonstration of Dermatologic Diagnostic and Therapeutic Methods (extends into lunch) <i>Naomi Aronson, MD</i> <i>Justin Bandino, MD</i> <i>Alexia Knapp, MD</i> <i>Scott Norton, MD, MPH, MSc</i>
1:30 p.m.	Dermatologic Neglected Tropical Diseases: The Most N of the NTDs <i>Erin Amerson, MD</i> <i>Aileen Chang, MD</i>
2:15 p.m.	Skin Disorders Associated with Adventure Travel and Eco-Tourism <i>Wingfield Rehmus, MD, MPH</i>
2:30 p.m.	Jeopardy III: Parasites Lost (and other Communicable Conditions) <i>Erin Amerson, MD</i> <i>Esther Freeman, MD, PhD</i> <i>Scott Norton, MD, MPH, MSc</i> <i>Karolyn Wanat, MD</i>
3:30 p.m.	Questions and Panel Discussion <i>Naomi Aronson, MD</i> <i>Scott Norton, MD, MPH, MSc</i> <i>Faculty Members</i>
4 p.m.	Course Adjourns

ANNUAL MEETING

FACULTY AFFILIATIONS



Faculty List

Naomi Aronson, MD

Course Co-chair
Director
Infectious Disease Division
Uniformed Services University of the Health Sciences
Bethesda, MD, United States

Scott Norton, MD, MPH, MSc

Course Co-chair
Dermatology Division Chief
Children's National Medical Center
Washington, DC, United States

Erin Amerson, MD

Associate Clinical Professor of Dermatology
University of California San Francisco
Medical Director
Zuckerberg San Francisco General Hospital Clinic
San Francisco, CA, United States

Byron Arana, MD, PhD

Cutaneous Leishmaniasis Team Lead
Drugs for Neglected Diseases
Geneva, Switzerland

Justin Bandino, MD

Dermatology Department
San Antonio Military Medical Center
San Antonio, TX, United States

Andrea Boggild, BSc, MSc, MD, FRCPC

Clinical Director
Tropical Disease Unit
Toronto General Hospital
University of Toronto
Toronto, ON, Canada

Pierre Buffet, MD, PhD

UPMC-Service de Parasitologie Mycologie
Université Paris Descartes
Paris, France

Edgar Carvalho, MD, PhD

Professor of Medicine and Clinical Immunology
Federal University of Bahia
Salvador, Brazil

Aileen Chang, MD

Dermatology Department
University of California San Francisco
San Francisco, CA, United States

Esther Freeman, MD, PhD

Department of Dermatology
Massachusetts General Hospital
Cambridge, MA, United States

L. Claire Fuller, MBBS

Dermatology Department
Chelsea & Westminster Hospital – NHS
London, United Kingdom

Peter Hotez, MD, PhD, FASTMH

Dean and Professor
Pediatrics, Molecular Virology and Microbiology
Baylor College of Medicine
National School of Tropical Medicine
Houston, TX, United States

Alexia Knapp, MD

Dermatologist
HealthPartners Medical Group
University of Minnesota Global Health Pathway
St. Paul, MN, United States

Wingfield E. Rehmus, MD, MPH

Dermatology Department
University of British Columbia
Vancouver, BC, Canada

Karolyn Wanat, MD

Dermatologist
University of Iowa Hospital and Clinics
Iowa City, IA, United States

ANNUAL MEETING



BEWARE!

Housing scam alert!

See page 39 for information on unauthorized third parties offering hotel rooms to obtain your credit card information.

Clinical Pre-Meeting Course Fees

October 27, 2018:

Noon – 5 p.m. (Pre-Meeting Course Attendee Reception: 5 p.m.)

October 28, 2018:

7 a.m. – 4 p.m.

Full 1.5-Day Course

Saturday, October 27 and Sunday, October 28

	On or before September 21	September 22 through October 19	October 20 through the Annual Meeting
Member	\$290	\$320	\$350
Non-Member	\$545	\$575	\$605
Student/Trainee Member	\$160	\$190	\$220
Student/Trainee Non-Member	\$185	\$215	\$245

Accreditation and Continuing Medical Education Credit

ASTMH is accredited by the Accreditation Council for Continuing Medical Education (ACCME) to provide continuing medical education for physicians. ASTMH designates this live educational activity for a maximum of 11.25 *AMA PRA Category 1 Credits™*. Physicians should claim only the credit commensurate with the extent of their participation in the activity.

Physician Assistant Continuing Education Credit

AAPA accepts certificates of participation for educational activities certified for *AMA PRA Category 1 Credit™* from organizations accredited by ACCME or a recognized state medical society. Physician assistants may receive a maximum of 11.25 *AMA PRA Category 1 Credits™* for completing this program.

Disclosure of Faculty's Commercial Relationships

Consistent with ASTMH policy, faculty are required to disclose any economic or other personal interests that create, or may be perceived as creating, a conflict of interest related to the material discussed. ASTMH resolves all conflicts of interest. Faculty are required to disclose at the beginning of their presentation(s) any relevant financial relationships, as well as any product mentioned during the presentation that is not labeled for the use under discussion or is still investigational. This policy is intended to allow attendees to form their own judgments about such material.

Clinical Pre-Meeting Course Syllabus—Available Online (post-course)

The syllabus with course materials will be available for download to all registrants post-course. An email will be sent to all registrants with download instructions. Only those who registered for the course will have access to the course materials. A printed syllabus will not be distributed at the course.

“I really like the opportunities the Annual Meeting has for trainees.”

~2017 Attendee

ANNUAL MEETING

Parasitology (ACMCIP) Pre-Meeting Course:

BIG DATA AND GENOMICS – A PRACTICAL WORKSHOP ON SEQUENCE ANALYSIS IN PARASITOLOGY

Sunday, October 28

7 a.m. – 5 p.m.



As the cost of genome sequencing has dropped, its applications to parasitology and tropical medicine have rapidly expanded. Identifying emerging pathogens and tracking their spread, understanding the origins and impact of drug resistance, investigating parasite population structures and how they are affected by disease elimination campaigns, carrying out fundamental studies of parasite cellular biology, tracing the evolution of the immune response to parasites – these are all fields where genomics and associated big data disciplines are becoming increasingly important. However, while generating sequence data has become increasingly easy, the tools needed to analyze and interpret these data can appear intimidating and change rapidly, making it difficult to gain experience.

This practical, hands-on workshop will introduce participants to publicly available sequence analysis tools. Using parasite genome and/or RNAseq data obtained from actual field or laboratory experiments, participants will learn analytical methods and workflows used to extract meaningful biological, evolutionary and/or epidemiological insights. Through live exercises led by experts in the field, participants will learn how to retrieve data from sequence repositories, run them through preconfigured or customized workflows, and visualize and explore the data using web-based tools. These exercises will be augmented with short, didactic presentations on the theory and application of sequencing tools to parasitology research. Overall, the workshop will be interactive, interdisciplinary and provide participants with relevant tools and expertise to apply in their own research. Given the strong emphasis on hands-on learning, and the need to access web-based tools, participants will need to bring their own laptops if at all possible; availability of computers for all participants cannot be guaranteed.

Course Objectives

- Summarize the theoretical basics of genome and transcriptome analysis and the range of current tools
- Retrieve data from sequence repositories and run data through preconfigured or customized workflows
- Identify publicly available sequence analysis tools and use them to extract meaningful biological, evolutionary and/or epidemiological insights

Target Audience

Scientists, physicians, clinicians, graduate students and educators with interests in the topic of big data and genomics

Attend this course if you:

- Seek exposure to current advances in the field of genomics and associated big data disciplines
- Need experience using parasite genome and/or RNAseq data obtained from actual field or laboratory experiments
- Seek information about the availability of genome sequencing tools and their uses

“An invaluable field experience and sharing forum.”

~2017 Attendee

ANNUAL MEETING

FACULTY AFFILIATIONS



Benefit from this course by:

- Increasing your awareness and knowledge of the uses of genomics methods within your practice
- Improving your ability to analyze and interpret genome sequence data
- Increasing your competence in the application of sequencing tools to tropical medicine research

Parasitology Pre-Meeting Course Agenda

Sunday, October 28

7 a.m.	Light Continental Breakfast
8 a.m.	Introductory Lecture: The Next-Generation Sequencing Revolution <i>Julian Rayner, PhD</i>
8:30 a.m.	Hands-on Exercise: Preparing and Running an RNAseq or Variant Calling Analysis Workflow
11 a.m.	Coffee Break
11:15 a.m.	Lectures: RNAseq/Variant Analysis – Applications and Tools <i>Michael Ferdig, PhD</i> <i>Jessica Kissinger, PhD</i>
Noon	Lunch (on your own)
1:15 p.m.	Hands-on Exercise: Understanding Output Files, Analyzing and Visualizing Results (coffee provided)
4:15 p.m.	Wrap-up and Discussion
5 p.m.	Course Adjourns

Faculty List

Michael Ferdig, PhD

Course Organizer

Professor

University of Notre Dame

Notre Dame, IN, United States

Omar Harb, PhD

Course Organizer

Director of Scientific Outreach and Education

Penn Center for Bioinformatics

University of Pennsylvania

Philadelphia, PA, United States

Jessica Kissinger, PhD

Course Organizer

Distinguished Research Professor

Director, Institute of Bioinformatics

Department of Genetics

University of Georgia

Athens, GA, United States

Jacquin Niles, MD, PhD

Course Organizer

Associate Professor of Biological Engineering

Massachusetts Institute of Technology

Cambridge, MA, United States

Julian Rayner, PhD

Course Organizer

Senior Group Leader

Malaria Programme

Wellcome Trust Sanger Institute

Cambridge, United Kingdom

Sebastian Baumgarten, PhD

Course Instructor

Postdoctoral Researcher

Scherf Lab, Biology of Host-Parasite

Interactions Unit

Institut Pasteur

Paris, France

ANNUAL MEETING

Faculty List (cont.)

Daniel Beiting, PhD

Course Instructor
Assistant Professor of Pathobiology
School of Veterinary Medicine
Department of Pathobiology
University of Pennsylvania
Philadelphia, PA, United States

Katrina Button-Simons, PhD

Course Instructor
Postdoctoral Fellow
Ferdig Lab
University of Notre Dame
Notre Dame, IN, United States

Sasha Siegel, PhD

Course Instructor
Wellcome Trust Sanger Institute
Cambridge, United Kingdom

Susanne Warrenfeltz, PhD

Course Instructor
Scientific Outreach Coordinator
University of Georgia
Athens, GA, United States

Mary Wilson, MD

Course Instructor
Professor of Global Health
Department of Internal Medicine and
Microbiology
University of Iowa College of Medicine
Iowa City, IA, United States

Parasitology Pre-Meeting Course Fees

	On or before September 21	September 22 through October 19	October 20 through the Annual Meeting
Member	\$260	\$290	\$320
Non-Member	\$490	\$520	\$550
Student/Trainee Member	\$125	\$155	\$185
Student/Trainee Non-Member	\$150	\$180	\$210

Accreditation and Continuing Medical Education Credit

ASTMH is accredited by the Accreditation Council for Continuing Medical Education (ACCME) to provide continuing medical education for physicians. ASTMH designates this live educational activity for a maximum of 7.5 *AMA PRA Category 1 Credits™*. Physicians should claim only the credit commensurate with the extent of their participation in the activity.

Physician Assistant Continuing Education Credit

AAPA accepts certificates of participation for educational activities certified for *AMA PRA Category 1 Credit™* from organizations accredited by ACCME or a recognized state medical society. Physician assistants may receive a maximum of 7.5 *AMA PRA Category 1 Credits™* for completing this program.

Disclosure of Faculty's Commercial Relationships

Consistent with ASTMH policy, faculty are required to disclose any economic or other personal interests that create, or may be perceived as creating, a conflict of interest related to the material discussed. ASTMH resolves all conflicts of interest. Faculty are required to disclose at the beginning of their presentation(s) any relevant financial relationships, as well as any product mentioned during the presentation that is not labeled for the use under discussion or is still investigational. This policy is intended to allow attendees to form their own judgments about such material.

Parasitology Pre-Meeting Course Syllabus—Available online (post-course)

The syllabus with course materials will be available for download to all registrants post-course. An email will be sent to all registrants with download instructions. Only those who registered for the course will have access to the course materials. A printed syllabus will not be distributed at the course.

ANNUAL MEETING

Global Health (ACGH) Pre-Meeting Course:

THE GLOBAL HEALTH IMPACT OF URBANIZATION AND MEGACITIES – TRENDS, RISK MANAGEMENT AND RESEARCH NEEDS

Sunday, October 28

7:15 a.m. – 4 p.m.



This course will explore the changing worldwide landscape and global health risks with the exponential increase in urban population growth. More than half of the world's population lives in urban areas, and roughly one in three urban inhabitants now lives in slums or other type of informal settlements. By 2050, the world's urban population will nearly double to 6.3 billion. As urban growth continues, the impact on natural resources and public health risks will grow, compounded by climate change. Air pollution, lack of sanitation and clean water (or any water) will detrimentally impact urban populations. In addition, economic fragility and poor access to healthcare, lack of infrastructure and vulnerability to floods, earthquakes, droughts and other human-made and natural disasters increase health risks. Half of the global population lives in areas with *Aedes aegypti* mosquitoes, which are adapted to the urban landscape and is the vector for yellow fever, dengue, chikungunya and Zika viruses. Beyond vector-borne diseases, the lack of barriers between animals, vectors, the environment and water supply increases the risk of other diseases such as leptospirosis, Ebola and plague. We urgently need to be prepared for new microbial transmission pathways in the urban environment that affect human health. This course will bring together experts to discuss how to manage risks that the world will face as cities continue to grow and will attempt to answer the following questions:

- What are the drivers for urbanization that lead to increased risk of human exposure – and what are potentially successful mitigation methods?
- What is the current state of affairs in urban planning to mitigate health risks?
- How can the urban environment improve access to safe water and reduce exposure to air pollution?
- How can health assessments and health equity be improved in slums?
- How can accurate and timely data be captured that will describe urban disease transmission that will allow targeted interventions?
- What increases the risk of transmission of infectious diseases within, into and out of urban centers via animals and vectors, and what are the research gaps and successes for decreasing transmission?
- What global initiatives offer guidance and approaches to shape health-promoting urban settings to decrease infectious disease transmission?

Course Objectives

- Cite the health risks that accompany the large growth of cities
- Explain new microbial transmission pathways, describe effective efforts to block these pathways and recognize and treat diseases not previously seen in some urban areas
- Summarize the impact of human growth on natural resources and the risks to public health, compounded by climate change

Target Audience

This course is for graduate students, public health practitioners, global health policymakers and development partners with an interest in the impact of urbanization and megacities.

“Appreciated the app for sorting out sessions to attend.”

~2017 Attendee

ANNUAL MEETING



“Very informative and relevant to tropical medicine and health.”

~2017 Attendee

Attend this course if you:

- Need education on the changing worldwide landscape and global health risks resulting from the exponential increase in urban population growth
- Seek information on how the urban environment provides increased reservoirs and vectors of infectious diseases and subsequent increased exposures
- Seek data about how air pollution, poor sanitation techniques and human-made and natural disasters can detrimentally impact urban populations

Benefit from this course by:

- Increasing your ability to manage health risks of patients living in large urban areas
- Improving your skills in health-promoting urban settings to decrease infectious disease transmission and recognize and treat diseases promptly
- Improving your competence in critical analysis of health risks in urban environments

Global Health Pre-Meeting Course Agenda

7:15 a.m. Light Continental Breakfast

7:45 a.m. **Introduction of Topic and Logistics**

Urban Health Dynamics

8 a.m. **Urban Health: A Global Perspective**

Jo Ivey Boufford, MD

8:30 a.m. **Urban Health Complexities and Inequities**

Alayne Adams, PhD

9 a.m. **Case Study Part I**

9:15 a.m. Coffee Break

Urban Planning – Water, Air and Sanitation

9:30 a.m. **Health Opportunities from Clean Power and Alternative Transportation in Cities**

Jonathan Patz, MD, MPH

10 a.m. **Water, Sanitation and Hygiene Interventions Fit for Context: Slums and Humanitarian Response**

Daniele Lantagne, PhD

10:30 a.m. **Thirsty Cities in the 21st Century: The Need for New Approaches**

Stephen Luby, MD

11 a.m. **Panel Discussion**

11:15 a.m. **Case Study Part 2**

11:45 a.m. Lunch (on your own)

Health Impacts

1 p.m. **Emerging Infectious Disease Threats in the Urban Slum Environment**

Albert Ko, MD

1:30 p.m. **Epidemiological Shift in Developing Countries: Impact of Non-Communicable Disease and Nutrition in Urban Centers**

Sohana Shafique, PhD, MSc, MPH

2 p.m. **Assessing Health System Performance in Global Cities**

Michael K. Gusmano, PhD

Victor G. Rodwin, PhD, MPH

2:30 p.m. **Panel Discussion**

ANNUAL MEETING

FACULTY AFFILIATIONS



Global Health Pre-Meeting Course Agenda (cont.)

3 p.m.	Coffee Break
3:15 p.m.	Case Study Part 3
3:30 p.m.	Cross-sectional Collaboration in Urban Health in Latin America – The Observatory for Urban Health in Belo Horizonte City <i>Waleska Teixeira Caiaffa, MD, PhD, MPH</i>
4 p.m.	Course Adjourns

Faculty List

Daouda Ndiaye, PhD, PharmD, FASTMH

Course Organizer

Professor
Cheikh Anta Diop University
Hopital Aristide Le Dantec
Laboratoire de Parasitologie-Mycologie
Dakar, Senegal

Julie Pavlin, MD, PhD, MPH

Course Organizer

Director, Board on Global Health
National Academies of Sciences,
Engineering, and Medicine
Washington, DC, United States

Christopher Perdue, MD, MPH

Course Organizer

Assistant Secretary for Preparedness
and Response
U.S. Public Health Service
Washington, DC, United States

Alayne Adams, PhD

Associate Professor
Department of International Health
Georgetown University
Washington, DC, United States

Jo Ivey Boufford, MD

Clinical Professor of Global Health
Clinical Professor of Pediatrics
New York University
President
International Society of Urban Health
New York, NY, United States

Waleska Teixeira Caiaffa, MD, PhD, MPH

Professor
Federal University of Minas Gerais,
School of Medicine
Director
Observatory for Urban Health
Belo Horizonte, Brazil

Michael K. Gusmano, PhD

Associate Professor of Health Policy
Rutgers University, School of Public Health
New Brunswick, NJ, United States

Albert Ko, MD

Professor and Department Chair
Epidemiology and Microbial Diseases
Yale School of Public Health
New Haven, CT, United States

Daniele Lantagne, PhD

Associate Professor
Department of Civil and Environmental
Engineering
Tufts University
Medford, MA, United States

Stephen Luby, MD

Professor of Medicine and Senior Fellow
Woods Institute and Freeman Spogli Institute
Stanford University
Stanford, CA, United States

Jonathan Patz, MD, MPH

Professor and John P Holton Chair
Director, Global Health Institute
University of Wisconsin – Madison
Madison, WI, United States

Victor Rodwin, PhD, MPH

Professor of Health and Policy Management
New York University
New York, NY, United States

Sohana Shafique, PhD, MSc, MPH

Assistant Scientist and Deputy Project
Coordinator
International Centre for Diarrhoeal
Disease Research
Dhaka, Bangladesh

ANNUAL MEETING



Global Health Pre-Meeting Course Fees

	On or before September 21	September 22 through October 19	October 20 through the Annual Meeting
Member	\$260	\$290	\$320
Non-Member	\$490	\$520	\$550
Student/Trainee Member	\$125	\$155	\$185
Student/Trainee Non-Member	\$150	\$180	\$210

Accreditation and Continuing Medical Education Credit

ASTMH is accredited by the Accreditation Council for Continuing Medical Education (ACCME) to provide continuing medical education for physicians. ASTMH designates this live educational activity for a maximum of 6.5 *AMA PRA Category 1 Credits™*. Physicians should claim only the credit commensurate with the extent of their participation in the activity.

Physician Assistant Continuing Education Credit

AAPA accepts certificates of participation for educational activities certified for *AMA PRA Category 1 Credit™* from organizations accredited by ACCME or a recognized state medical society. Physician assistants may receive a maximum of 6.5 *AMA PRA Category 1 Credits™* for completing this program.

Disclosure of Faculty's Commercial Relationships

Consistent with ASTMH policy, faculty are required to disclose any economic or other personal interests that create, or may be perceived as creating, a conflict of interest related to the material discussed. ASTMH resolves all conflicts of interest. Faculty are required to disclose at the beginning of their presentation(s) any relevant financial relationships, as well as any product mentioned during the presentation that is not labeled for the use under discussion or is still investigational. This policy is intended to allow attendees to form their own judgments about such material.

“New ideas on technologies, scientific collaboration and equipment for diagnostic and research.”

~2017 Attendee



ANNUAL MEETING



Medical Entomology (ACME) Pre-Meeting Course: VECTOR-BORNE DISEASE RISK AND PREVENTION FOR THE CLINICIAN

Sunday, October 28

7:30 a.m. – 4 p.m.

Blood-sucking insects and ticks transmit some of the most devastating, yet in many cases preventable, human diseases including malaria, dengue, chikungunya, Zika, Lyme disease, leishmaniasis and Chagas disease. This course will review the basic biology of major arthropod vectors; discuss the geographic and behavioral risks posed by vector-borne diseases; and present preventive options, including personal protection and environmental control methods. The course is designed to help medical professionals advise their patients about the risks and prevention measures against biting insects and ticks. A Q&A session on common client questions, how to address them and where to find resources will be provided.

Course Objectives

- Identify the range of species that transmit human pathogens
- Describe the geographic and behavioral risks associated with different vector species
- Explain personal protection and environmental control methods

Target Audience

Scientists, physicians, clinicians, residents, fellows, graduate students and educators with an interest in the topic of vector-borne diseases

Attend this course if you:

- Seek a better understanding about the diverse arthropods involved in pathogen transmission
- Seek information about the biogeography and behavioral risks of arthropod vectors to understand when, where and why the risk exists
- Need education about the most important personal protection measures against arthropod vectors

Benefit from this course by:

- Improving your understanding of the basic biology and variety of arthropod vectors
- Increasing your competence in advising patients about the risks of common vector-borne diseases
- Improving your ability to prevent vector-borne diseases



BEWARE!

Housing scam alert!

See page 39 for information on unauthorized third parties offering hotel rooms to obtain your credit card information.

“Great place to meet colleagues/
collaborators – deliberately
or by accident.”

~2017 Attendee

ANNUAL MEETING

FACULTY AFFILIATIONS



Medical Entomology Pre-Meeting Course Agenda

7:30 a.m.	Light Continental Breakfast
8 a.m.	Overview of the Course – Introduction to Vectors and their Diseases <i>Laura Harrington, PhD</i>
8:30 a.m.	Tick-bite Prevention and Prophylaxis of Lyme Disease <i>Douglas MacQueen, MD</i>
9:30 a.m.	Mosquitoes and Malaria <i>Brian Foy, PhD</i>
10:30 a.m.	Coffee Break
10:45 a.m.	Mosquitoes and Arboviral Diseases <i>Philip Armstrong, ScD</i>
11:45 a.m.	Lunch (on your own)
1 p.m.	Kissing Bugs and Chagas Disease <i>Sarah Hamer, PhD, DVM</i>
2 p.m.	Environmental Risk and Prevention Against Sandfly Vectors of Leishmaniasis <i>Christine Petersen, DVM, PhD</i>
3 p.m.	Question and Answer Session <i>Philip Armstrong, ScD</i> <i>Christopher Barker, PhD</i> <i>Laura Harrington, PhD</i> <i>Douglas MacQueen, MD</i>
4 p.m.	Course Adjourns

Faculty List

Philip Armstrong, ScD

Course Co-chair
Agricultural Scientist
Department of Environmental Sciences
Connecticut Agricultural Experiment Station
New Haven, CT, United States

Christopher Barker, PhD

Course Co-chair
Associate Professor
University of California, Davis
Davis, CA, United States

Laura Harrington, PhD

Course Co-chair
Professor
Department of Entomology
Cornell University
Ithaca, NY, United States

Brian Foy, PhD

Professor
Arthropod-Borne and Infectious
Disease Laboratory
Colorado State University
Fort Collins, CO, United States

Sarah Hamer, PhD, DVM

Associate Professor
Veterinary Integrative Biosciences
Texas A&M University
College Station, TX, United States

Douglas MacQueen, MD

Medical Director
Cayuga Medical Center
Ithaca, NY, United States

Christine Petersen, DVM, PhD

Associate Professor
College of Public Health
University of Iowa
Iowa City, IA, United States

ANNUAL MEETING



Medical Entomology Pre-Meeting Course Fees

	On or before September 21	September 22 through October19	October 20 through the Annual Meeting
Member	\$260	\$290	\$320
Non-Member	\$490	\$520	\$550
Student/Trainee Member	\$125	\$155	\$185
Student/Trainee Non-Member	\$150	\$180	\$210

Accreditation and Continuing Medical Education Credit

ASTMH is accredited by the Accreditation Council for Continuing Medical Education (ACCME) to provide continuing medical education for physicians. ASTMH designates this live educational activity for a maximum of 6.5 *AMA PRA Category 1 Credits™*. Physicians should claim only the credit commensurate with the extent of their participation in the activity.

Physician Assistant Continuing Education Credit

AAPA accepts certificates of participation for educational activities certified for *AMA PRA Category 1 Credit™* from organizations accredited by ACCME or a recognized state medical society. Physician assistants may receive a maximum of 6.5 *AMA PRA Category 1 Credits™* for completing this program.

Disclosure of Faculty's Commercial Relationships

Consistent with ASTMH policy, faculty are required to disclose any economic or other personal interests that create, or may be perceived as creating, a conflict of interest related to the material discussed. ASTMH resolves all conflicts of interest. Faculty are required to disclose at the beginning of their presentation(s) any relevant financial relationships, as well as any product mentioned during the presentation that is not labeled for the use under discussion or is still investigational. This policy is intended to allow attendees to form their own judgments about such material.

Medical Entomology Pre-Meeting Course Syllabus - Available Online (post-course)

The syllabus with course materials will be available for download to all registrants post-course. An email will be sent to all registrants with download instructions. Only those who registered for the course will have access to the course materials. A printed syllabus will not be distributed at the course.

“The scientific content was fascinating.”

~2017 Attendee

ANNUAL MEETING

INVITED LECTURES

ASTMH President's Address

"The 13th Grape"

Wednesday, October 31, 6:15 p.m.



Regina Rabinovich, MD

ExxonMobil Malaria Scholar in Residence

Harvard T.H. Chan School of Public Health

Director, Malaria Elimination Initiative

ISGLOBAL, University of Barcelona

Regina Rabinovich is the ExxonMobil Malaria Scholar in Residence at Harvard University, and Director of the Malaria Elimination Initiative at ISGLOBAL at the University of Barcelona. She serves as the Chair of the Malaria Eradication Scientific Alliance, hosted at ISGLOBAL, and led the steering committee for the MalERA Refresh. She has over 25 years of experience in global health across research, public health, and philanthropic sectors, with focus on strategy, global health product development, and the introduction and scale-up of tools and strategies resulting in impact on endemic populations. Prior to joining Harvard, Dr. Rabinovich served as Director of the Infectious Diseases division at the Bill & Melinda Gates Foundation, overseeing the development and implementation of strategies for the prevention, treatment, and control of infectious diseases of particular relevance to malaria, pneumonia, diarrhea, and neglected infectious diseases. Dr. Rabinovich was Chief of the Clinical and Regulatory Affairs Branch at the US National Institute of Allergy and Infectious Diseases (NIAID), focusing on the development and evaluation of vaccines through a network of US clinical research units. She participated in the Children's Vaccine Initiative, a global effort to prevent infectious diseases in children in the developing world. In 1999, Dr. Rabinovich became the founding director of the PATH Malaria Vaccine Initiative, a project funded by the Bill & Melinda Gates Foundation to advance efforts to develop promising malaria vaccine candidates. She is currently president of the American Society of Tropical Medicine and Hygiene and serves on the boards of CMMB, and AERAS, a non-profit biotech focused on development of vaccines for tuberculosis, and the Sabin Vaccine Institute. Dr. Rabinovich holds a medical degree from Southern Illinois University and a Masters of Public Health degree from the University of North Carolina.

ANNUAL MEETING

INVITED LECTURES (cont.)

Charles Franklin Craig Lecture

Monday, October 29, 6:15 p.m.



Beth Kirkpatrick, MD, FASTMH, FIDSA

Professor and Chair, Department of Microbiology and Molecular Genetics

Director, Vaccine Testing Center

University of Vermont Robert Larner, MD College of Medicine, Burlington, VT



Charles Franklin Craig

Dr. Kirkpatrick is the Chair of the Department of Microbiology and Molecular Genetics at the UVM College of Medicine. She founded the UVM Vaccine Testing Center (VTC) in 2002 and leads a committed team of faculty and staff researchers studying human immunology and vaccines with the goal of understanding and preventing infectious diseases around the globe. Dr. Kirkpatrick and her team perform U.S.-based and international clinical research, which includes clinical trials and human experimental infection models, as well as translational research. In addition to developing and evaluating candidate vaccines, the team strives to characterize the human host's immunological response to clinically important infectious agents and vaccines, with a particular interest in enteric infections and flaviviruses.

Dr. Kirkpatrick obtained her Doctor of Medicine from Albany Medical College. She performed residency in Internal Medicine at the University of Rochester and completed her Infectious Disease Fellowship at Johns Hopkins School of Medicine.

Commemorative Fund Lecture

Tuesday, October 30, 6:15 p.m.



Kelly Chibale, PhD

South Africa Research Chair in Drug Discovery

Director, Drug Discovery and Development Centre, H3D

Director, SAMRC/UCT Drug Discovery and Development Research Unit

University of Cape Town (UCT), South Africa

Dr. Chibale studied for his undergraduate degree in chemistry at the University of Zambia and proceeded to pursue his PhD degree in Synthetic Organic Chemistry at the University of Cambridge in the United Kingdom. This was followed by postdoctoral stints at the University of Liverpool in the United Kingdom and at the Scripps Research Institute in the United States. He was a Sandler Sabbatical Fellow at the University of California San Francisco, a U.S. Fulbright Senior Research Scholar at the University of Pennsylvania School of Medicine and a Visiting Professor at Pfizer in the United Kingdom. He is a full Professor of Organic Chemistry at UCT, a Tier 1 South Africa Research Chair in Drug Discovery, founding Director of the extramural South African Medical Research Council (SAMRC) Drug Discovery and Development Research Unit at UCT, and the Founder and Director of the UCT Drug Discovery and Development Centre H3D, Africa's first integrated drug discovery center.

Dr. Chibale was recently appointed by the South African Minister of Health to serve on the newly established South African Health Products Regulatory Authority (SAHPRA) board. He previously served as member of the Medicines for Malaria Venture Expert Scientific Advisory Committee and the Expert Advisory Board of the United Kingdom's Department of Health Global Antimicrobial Resistance Innovation Fund. He was recently named one of Fortune Magazine's 50 World's Greatest Leaders for 2018.

ANNUAL MEETING

INVITED LECTURES (cont.)

Vincenzo Marcolongo Memorial Lecture

**David C. Christiani, MD, MPH, MS**

*Elkan Blout Professor of Environmental Genetics,
Harvard T. H. Chan School of Public Health
Professor of Medicine, Harvard Medical School
Physician, Pulmonary and Critical Care Division,
Department of Medicine, Massachusetts General Hospital*



Vincenzo Marcolongo

David Christiani is a Professor of Medicine at Harvard Medical School; Physician, Pulmonary and Critical Care Unit of Massachusetts General Hospital; and the Elkan Blout Professor of Environmental Genetics at the Harvard School of Public Health. He earned his MD in 1976 from Tufts University, and an MS and MPH from the Harvard School of Public Health. He did his post-graduate medical training at Boston City Hospital and the Massachusetts General Hospital in Boston.

His major research interest lies in the interaction between human genes and the environment. Using the tools of molecular epidemiology, he studies the impact of humans' exposure to pollutants on health, as well as how genetic and acquired susceptibility to these diseases (along with environmental exposures) can lead to acute and chronic pulmonary and cardiovascular disease, and cancer. He has been active for over 35 years in conducting epidemiologic studies in international settings.

In East and Southwest Asia, Dr. Christiani and his network of collaborators are studying the health effects of exposure to vegetable dust and respiratory disease in China; lung cancer genetics and prognosis in China; and arsenic exposure and respiratory disease in Bangladesh, among other sites and studies.

At Massachusetts General Hospital, Dr. Christiani leads the Molecular Epidemiology Research Group that conducts research on environmental conditions of the lung, including acute lung injury, lung cancer and respiratory responses to environmental toxicants. He has authored or co-authored over 700 peer-reviewed publications and has served on the editorial board of several journals. In 2012, he was appointed by President Barack Obama to the National Cancer Advisory Board.

ANNUAL MEETING

INSTITUTE FOR DISEASE MODELING

WORKSHOPS

Introduction to Agent-Based Modeling for Infectious Diseases

Organized by Institute for Disease Modeling

Saturday, October 27

Morning Session: 8 a.m. - Noon

Afternoon Session: 1 p.m. – 5 p.m.

Capacity of 25 attendees per session (free); only register for one session

Attendees must pre-register for this workshop using the ASTMH online registration form.

ASTMH and the Institute for Disease Modeling (IDM) are partnering to offer an introductory course on using agent-based models for modeling infectious diseases. Modeling is an essential component for understanding disease dynamics and creating effective control strategies, yet it remains inaccessible to many researchers in public health. IDM is comprised of global health researchers, as well as professional software engineers, and has created an agent-based model, the Epidemiological MODELing software (EMOD), that is freely available to the research community. Agent-based models (ABMs) simulate the simultaneous interactions of individual agents to recreate complex phenomena, and are especially useful for modeling transmission dynamics. ASTMH and IDM are offering this workshop on ABMs with the intention of making modeling more accessible to public health researchers, using EMOD as the modeling framework.

In this workshop, attendees will first get an overview of the fundamentals of disease modeling, and then hands-on modeling experience using EMOD. Participants will have access to IDM's newly developed web-based graphical tool that was designed to facilitate the learning process for EMOD. Included in the course materials will be example exercises and tutorials that participants can explore using EMOD. By the end of the workshop, participants should have a working understanding of the fundamental concepts of disease modeling and be familiar with agent-based models, their utility and their limitations. Additionally, participants will become familiar with IDM's available software tools and how the tools can be used for their own research projects. Motivated participants will have the opportunity to download and install the EMOD software, run local simulations and be able to explore open questions and exercises that were proposed in the workshop.

The target audience for this workshop includes researchers in public health and epidemiology at a professional level (e.g., possessing a PhD, MD, Master's or related degree) or working toward a professional degree (graduate students are welcome). Prerequisite knowledge includes a basic understanding of compartmental modeling (e.g., SIR models), familiarity with general epidemiology, and an interest in learning how to use ABM's for public health research.

Please note, all participants of this session will need a laptop computer with Wi-Fi capabilities. For those interested in installing the EMOD software, they will need administrative rights to the computer.



Public Library of Science - PLOS Writing Workshop

Sunday, October 28

Noon – 4:30 p.m.

Attendees must pre-register for this workshop using the ASTMH online registration form.

PLOS Pathogens and PLOS Neglected Tropical Diseases, along with the American Journal of Tropical Medicine and Hygiene and Vector-Borne and Zoonotic Diseases, present a Writing Workshop intended to equip and support early career researchers and researchers from disease endemic regions in understanding the publication process and best practices for manuscript writing. Highlights of the sessions include: framing your research and choosing your journal, mapping out your paper, abstract writing, the mechanics of writing, and research and publication ethics. For more information, contact Charlotte Bhaskar at cbhaskar@plos.org.

ANNUAL MEETING

REGISTRATION INFORMATION

Registration Fees

Member, non-member and student/trainee registration fees include plenary sessions, scientific sessions, symposia, poster sessions, exhibit hall admittance, light lunches, coffee breaks and Sunday's opening reception. Pre-meeting courses and CME documentation require additional fees. Participation is limited to registered attendees and guests. The official ASTMH Annual Meeting name badge is required for admittance to all sessions and events. Attendees may register in advance at astmh.org by using the online registration system or by completing the Annual Meeting registration form and submitting it with full payment to the ASTMH office.

	On or before September 21	September 22 through October 19	October 20 through the Annual Meeting
Member	\$570	\$630	\$690
Non-member	\$895	\$955	\$1015
Student/Trainee	\$190	\$250	\$310
Student Non-Member/Trainee	\$215	\$275	\$335
Emeritus Member	\$205	\$265	\$325
Spouse/Partner/Guest	\$185	\$185	\$210
Local Student/Trainee	\$45	\$45	\$45

Join Now

Non-members, join now and qualify for the reduced member registration fee. Download the membership application or join online at astmh.org. Membership includes an e-subscription and reduced page charges for publication in the Society's monthly journal, the *American Journal of Tropical Medicine and Hygiene*.

Included in the Registration Fee...

Free Wi-Fi for All Attendees

Your ASTMH registration fee includes free Wi-Fi access throughout the registration area and meeting rooms of the Sheraton New Orleans and New Orleans Marriott. Use Wi-Fi to download the ASTMH meeting app from the Apple Store or Google (Wi-Fi is not needed to view the app or access content).

Meeting App

Approximately one month prior to the Annual Meeting, registered attendees can download the meeting app for easy access to all ASTMH program information. Use the app to view the meeting schedule, session and presenter information, full abstracts, exhibitors, maps and the Twitter feed.

Session Audio Recordings

Registrants will have free access to audio recordings and slides within 48 hours of each session.

Food Functions

- Opening reception
- Coffee breaks
- Light lunches
- Special functions for students/trainees
- Student reception
- Meet the Professors lunches on Monday, Tuesday and Wednesday



ANNUAL MEETING

REDUCED REGISTRATION FEE OPPORTUNITIES

See the online registration form for fee details.

Student/Trainee Reduced Registration Fee

Pre-doctoral students, post-doctoral students, fellows, residents and undergraduates qualify for the special student/trainee registration fee. You must submit a Certificate of Student Status form with your registration or a letter from a dean or program director verifying you are a student in good standing.

Spouse/Partner/Guest Reduced Registration Fee

The spouse/partner/guest registration includes the opening reception and admission to the exhibit hall, plenary sessions and poster sessions. Note that the spouse/partner/guest registration is applicable only to attendees from outside of the field of tropical medicine, hygiene and global health.

Emeritus Member Reduced Registration Fee

To facilitate attendance by emeritus members, ASTMH offers a reduced emeritus member registration fee.

Please note:

We guarantee that registration materials will be available for all pre-registered attendees. Print Program Books will be available for pre-registered attendees who check the option for a printed version during the registration process.

e-Abstract Book

The Annual Meeting Abstract Book will be available in electronic format, saving the ecological cost of printing 1,455,200 sheets of paper—that's more than 180 trees! The online book will include the full text of abstracts presented at the meeting (does not include Late-Breakers). This e-book will be emailed just prior to the meeting to all pre-registered attendees.

Late-Breaker Abstracts

Late-Breaker Abstracts are specifically designed for presentations of new data obtained after the closing date for regular abstract submissions. Late-Breaker Abstract presentations include: Late-Breakers in Basic Sciences; Late-Breakers in Clinical and Applied Sciences; and Late-Breakers in Malaria.

Online Registration

Online Registration Open through Annual Meeting!

If you are unable to register in advance of the meeting, plenty of opportunity remains. ASTMH will continue to accept online registrations through the Annual Meeting, which ends Thursday, November 1. This means you can register after you arrive in New Orleans, during your travels or onsite, with no waiting in line at the registration area. Simply register online and pick up your badge from the Badge Pickup area. Payment by credit card is required for online registration. You will receive a confirmation notice by email after your registration is processed.

Register online before the Annual Meeting:

1. Go to astmh.org and click the blue Annual Meeting box on the right side of the screen.
2. Click **Register Now** in the middle of the screen. Click the online registration link and log in.
3. **ASTMH MEMBERS:** Anyone completing the registration process on your behalf must have your login and password to receive the discounted member rate.
4. **NON-MEMBERS:** If you are a first-time attendee, you must create a Non-Member profile to proceed with online registration. If you are a returning Non-Member attendee and do not remember your login and/or password, use the Forgot Login/Password links.
5. Follow prompts to register for the meeting.

Do not click the SUBMIT button more than once. This action will result in multiple charges on your credit card.

Registration Payment

Mailed registrations must be in U.S. funds drawn on a U.S. bank and made payable to the American Society of Tropical Medicine and Hygiene. Registrations will only be processed with full payment. Send your registration using only one method of payment. Faxed registration forms that do not contain credit card information do not qualify as an early paid registration. If you wish to make payment by bank transfer, contact tcabrera@astmh.org to request ASTMH bank details.

Pre-registrations received online, by fax or by postal mail will be confirmed by email.

Registration processing time is approximately two weeks. We cannot confirm your registration until it is fully processed. Confirmation will be sent via email.

Americans With Disabilities Act

ASTMH complies with the legal requirements of the ADA and the rules and regulations thereof. Notify us of any special needs using the online registration form or the registration form in this brochure.

ANNUAL MEETING

Cancellations

Cancellations must be submitted in writing before September 28, 2018 to receive a refund minus a \$100 US administrative fee. Refunds will not be granted after this date and will not be given for no-shows. Submit cancellation requests to Brenda Howe at bhowe@astmh.org.

Membership Status

Membership status for each registrant will be verified. Registrations paid at the member rate without a valid current membership in ASTMh will automatically be charged the non-member registration fee.

Substitution Policy

Substitutions are allowed at any time. A substitution form must be completed and submitted to Brenda Howe at bhowe@astmh.org. **Note:** If the registration rates are different based on membership status, payment must be provided for any balance remaining on the registration.

Registration Desk

Pick up name badges and program materials at the ASTMh registration desk, located in the Rodrigue Gallery room on the lobby level of the Sheraton New Orleans.

Annual Meeting Registration

Sunday, October 28	7 a.m. – 7:30 p.m.
Monday, October 29	7 a.m. – 5 p.m.
Tuesday, October 30	7 a.m. – 5 p.m.
Wednesday, October 31	7 a.m. – 5 p.m.
Thursday, November 1	7 a.m. – 10:30 a.m.

“Learned a lot of the latest
in parasitology.”

~2017 Attendee



ANNUAL MEETING

CONTINUING EDUCATION CREDIT

Continuing Medical Education Accreditation

ASTMH is accredited by the Accreditation Council for Continuing Medical Education (ACCME) to provide continuing medical education for physicians. ASTMH designates this live educational activity for a maximum of 32.25 *AMA PRA Category 1 Credits™*. Physicians should claim only the credit commensurate with the extent of their participation in the activity.

Continuing Medical Education Credit — \$150 application fee

Use the online registration form to register and pay for CME credit.

Physician Assistant Continuing Education Credit — \$150 application fee

AAPA accepts certificates of participation for educational activities certified for *AMA PRA Category 1 Credit™* from organizations accredited by ACCME or a recognized state medical society. Physician assistants may receive a maximum of 32.25 *AMA PRA Category 1 Credits™* for completing this program. Use the Annual Meeting registration form to register and pay for CME credit.

Veterinarian Continuing Education Credit — \$150 application fee

To better serve the continuing education needs of the full range of disciplines participating in the Annual Meeting, ASTMH offers accredited CE sessions for veterinarians. The Society's application is reviewed by the determining body, the American Association of Veterinary State Boards RACE Committee. Anticipating approval, ASTMH is typically notified just prior to the start of the Annual Meeting. Register for this CE onsite or check off the veterinary CE box when registering.

ABIM MOC Credit

Successful completion of this CME activity, which includes participation in the evaluation component, enables the participant to earn up to 32.25 Medical Knowledge MOC points in the American Board of Internal Medicine's (ABIM) Maintenance of Certification (MOC) program. Participants will earn MOC points equivalent to the amount of CME credits claimed for the activity. It is the CME activity provider's responsibility to submit participant completion information to ACCME for the purpose of granting ABIM MOC credit.

If you wish to receive ABIM MOC credit, please register for CME credit for \$150. We cannot issue ABIM MOC credit unless the registration includes payment for CME credit. Attendees seeking ABIM MOC credit must also provide their ABIM MOC ID number and date of birth during the registration process.

Disclosure of Faculty's Commercial Relationships

Consistent with ASTMH policy, faculty are required to disclose any economic or other personal interests that create, or may be perceived as creating, a conflict of interest related to the material discussed. ASTMH resolves all conflicts of interest. Faculty are required to disclose at the beginning of their presentation(s) any relevant financial relationships, as well as any product mentioned during the presentation that is not labeled for the use under discussion or is still investigational. This policy is intended to allow attendees to form their own judgments about such material.



BEWARE!

Housing scam alert!

See page 39 for information on unauthorized third parties offering hotel rooms to obtain your credit card information.

ANNUAL MEETING

SCHEDULE-AT-A-GLANCE*

(*Subject to change)

Saturday, October 27

8 a.m. – Noon	Certificate of Knowledge in Clinical Tropical Medicine and Travelers' Health Examination (CTropMed® Program)
Noon – 6 p.m.	ASTMH Council Meeting
Noon – 5 p.m.	Clinical Pre-Meeting Course: Tropical Dermatology (One and one-half days) Supported by Thermosurgery Inc.

Sunday, October 28

9 a.m. – 7:30 p.m.	Registration
7 a.m. – 4 p.m.	Clinical Pre-Meeting Course: Tropical Dermatology (Second Day) Supported by Thermosurgery Inc.
7 a.m. – 5 p.m.	Parasitology Pre-Meeting Course: Big Data and Genomics – A Practical Workshop on Sequence Analysis in Parasitology
7:15 a.m. – 4 p.m.	Global Health Pre-Meeting Course: The Global Health Impact of Urbanization and Megacities – Trends, Risk Management and Research Needs
7:30 a.m. – 4 p.m.	Medical Entomology Pre-Meeting Course: Vector-Borne Disease Risk And Prevention for the Clinician
10 a.m. – 3 p.m.	Young Investigator Award Competition Sponsored by TECHLAB Inc. and PLOS Supported by Dr. Ann E. Petri and the late William A. Petri, Sr., The Petri Family, Michael Gottlieb, PhD, Thomas C. Green, Jr. and Joel Moss, MD, PhD
11 a.m. – Noon	American Committee on Arthropod-Borne Viruses (ACAV) SIE Subcommittee Meeting
Noon – 2 p.m.	ACAV SIRACA Subcommittee Meeting
Noon – 2:30 p.m.	Elsevier Clinical Research Award Competition
Noon – 4 p.m.	Communications Workshop
2 p.m. – 3:30 p.m.	ACAV SALS Subcommittee Meeting
2:30 p.m. – 3:30 p.m.	Point of Entry: First-Time Attendee Orientation
3:30 p.m. – 5:30 p.m.	American Committee on Clinical Tropical Medicine and Travelers' Health (ACCTMTH – Clinical Group) Council Meeting
	ASTMH Committee on Global Health (ACGH) Council Meeting
	American Committee of Molecular, Cellular and Immunoparasitology (ACMCIP) Council Meeting
4 p.m. – 5 p.m.	Student Reception
4 p.m. – 5:30 p.m.	American Committee of Medical Entomology (ACME) Council Meeting
	American Committee on Arthropod-Borne Viruses (ACAV) Council Meeting



ANNUAL MEETING

SCHEDULE-AT-A-GLANCE* (cont.)



“ASTMH is *muy buena!*”

~2017 Attendee

5:30 p.m. – 7 p.m. Official Opening of the Annual Meeting
Keynote Address and Awards Program
Keynote Address:
Matshidiso R. Moeti, MBBS, MSc, (CHDC), FLSHTM, DSc
WHO Regional Director for Africa

7 p.m. – 9:30 p.m. Welcome Reception and Exhibit Hall Opening
Sponsored in part by Sanofi Pasteur

Monday, October 29

7 a.m. – 5 p.m.	Registration
8 a.m. – 9:45 a.m.	Scientific Sessions/Symposia
9:30 a.m. – 10:30 a.m.	Exhibits
9:45 a.m. – 10:15 a.m.	Coffee Break
10:15 a.m. – Noon	Scientific Sessions/Symposia
Noon – 1:45 p.m.	Poster Session A and Exhibits
12:15 p.m. – 1:30 p.m.	Meet the Professors and Midday Sessions
1:45 p.m. – 3:30 p.m.	Scientific Sessions/Symposia
3:15 p.m. – 4:15 p.m.	Exhibits
3:30 p.m. – 4 p.m.	Coffee Break
4 p.m. – 5:45 p.m.	Scientific Sessions/Symposia
6:15 p.m. – 7 p.m.	Plenary Session: Charles Franklin Craig Lecture Beth D. Kirkpatrick, MD, FIDSA, FASTMH University of Vermont
7:15 p.m. – 9 p.m.	Sponsored Symposia

Tuesday, October 30

7 a.m. – 5 p.m.	Registration
8 a.m. – 9:45 a.m.	Scientific Sessions/Symposia
9:30 a.m. – 10:30 a.m.	Exhibits
9:45 a.m. – 10:15 a.m.	Coffee Break
10:15 a.m. – Noon	Scientific Sessions/Symposia
Noon – 1:45 p.m.	Poster Session B and Exhibits
12:15 p.m. – 1:30 p.m.	Meet the Professors and Midday Sessions
1:45 p.m. – 3:30 p.m.	Scientific Sessions/Symposia
3:15 p.m. – 4:15 p.m.	Exhibits
3:30 p.m. – 4 p.m.	Coffee Break
4 p.m. – 5:45 p.m.	Scientific Sessions/Symposia
6:15 p.m. – 7 p.m.	Plenary Session: Commemorative Fund Lecture Kelly Chibale, PhD University of Cape Town

ANNUAL MEETING

SCHEDULE-AT-A-GLANCE* (cont.)



7:15 p.m. – 9 p.m. Symposium

Wednesday, October 31

7 a.m. – 5 p.m. Registration

8 a.m. – 9:45 a.m. **Scientific Sessions/Symposia**

9:30 a.m. – 10:30 a.m. Exhibits

9:45 a.m. – 10:15 a.m. Coffee Break

10:15 a.m. – Noon **Scientific Sessions/Symposia**

Noon – 1:45 p.m. Poster Session C

Noon – 2:30 p.m. Exhibits

12:15 p.m. – 1:30 p.m. Meet the Professors and Midday Sessions

1:45 p.m. – 3:30 p.m. **Scientific Sessions/Symposia**

1:45 p.m. – 2:45 p.m. **Scientific Sessions/Symposia/Annual Business Meeting**

4 p.m. – 5:45 p.m. **Scientific Sessions/Symposia**

6:15 p.m. – 7 p.m. **Plenary Session:**
ASTMH President's Address
 Regina Rabinovich, MD
Harvard T.H. Chan School of Public Health

Thursday, November 1

7 a.m. – 10:30 a.m. Registration

7:30 a.m. – 9:30 a.m. ASTMH Council Meeting

8 a.m. – Noon **Scientific Sessions/Symposia**

Noon Annual Meeting Adjourns

“Sessions on global health were spot-on!”

~2017 Attendee

ANNUAL MEETING

TRAVEL INFORMATION

New Orleans, Louisiana

Now is the time to fall in love with New Orleans all over again. The cultural riches that define the New Orleans experience continue to flourish, as they have for centuries. The most celebrated and historic core of the city — including the Faubourg Marigny, French Quarter, Central Business District, Warehouse and Arts District, Magazine Street, Garden District, Audubon Park and Zoo and St. Charles Avenue — is thriving. The historic and cultural experience that has attracted millions of visitors for decades is as rich, charming and welcoming as ever. Come see and celebrate for yourself. Visitors guides are available from the New Orleans Convention & Visitors Bureau at 800-672-6124 or online.

Attendees Traveling from Overseas — Obtaining a Temporary Travel Visa

Visit unitedstatesvisas.gov for step-by-step instructions on the process for obtaining a temporary visa.

Invitation Letters — Available Online

You MUST be registered for the Annual Meeting in order to generate an invitation letter. Invitation letters are only for those traveling from outside the United States. Questions? Contact Brenda Howe, Registration Manager, at bhowe@astmh.org.

Airline Travel — Delta Airlines Discount*

Delta Airlines is offering special discounted* airfares for the Annual Meeting for travel originating in the United States or Canada. Discounts vary up to 10% off the fare for domestic travel, depending on the class of ticket purchased.

**Please note the following:*

- Not all airfares are eligible for a discount; fare rules determine eligibility
- Discounts vary, depending on the class of ticket purchased, and apply to round-trip travel only, and only for flights originating in the United States or Canada
- Not valid with other discounts, certificates, coupons or promotional offers

To take advantage of these travel discounts for flights to and from New Orleans:

- Go to www.Delta.com and click on «Book a Trip.» Click on the Advanced Search link.
- Enter your departure and arrival information and enter the code NMRCL in the Meeting Event Code box.
- You may also call Delta Meeting Network® Reservations at +1-800-328-1111. Use this same phone number to make changes to an existing Delta Meetings Network® reservation. On the Search Results page, verify the discount is applied. As a reminder, not all fares are eligible.

Louis Armstrong New Orleans International Airport (MSY)

From Louis Armstrong New Orleans International Airport (MSY), the Sheraton New Orleans and New Orleans Marriott are located eight miles northeast of the airport — approximately a 20-minute drive. Airport Shuttle offers service from the airport to the hotels in the Central Business District for \$15 US (per person, one-way) or \$30 US (per person, round-trip). Three bags per person. Call 1-866-596-2699 or 504-522-3500 for more details, or to make a reservation. Advance reservations are required 48 hours prior to travel for all ADA accessible transfers. Please call well enough in advance for the specially-equipped shuttle to be reserved. For group reservations of 10 or more people, dial 1-866-596-2699. Ticket booths are located on the lower level in the baggage claim area. Taxi service also is available for a one-way fare of approximately \$28 US.



ANNUAL MEETING

Attire, Climate and Time Zone

Temperatures in the New Orleans area in October can range from 52 degrees to 73 degrees Fahrenheit (11-22 degrees Celsius). Because of varying temperatures in hotel meeting rooms, we recommend that you dress in layers or bring a sweater or other warm clothing to wear during the meeting sessions.



Warning: Housing Scam Alert!

Unauthorized third parties are hosting fraudulent ASTMH Annual Meeting Websites and/or contacting previous Annual Meeting attendees and offering discounted hotel rooms for the 2018 Annual Meeting. These solicitations ask for credit card information and have resulted in fraudulent charges. **Do not provide any information.**

If you are approached by anyone offering a special hotel rate or hotel room for the ASTMH Meeting, please contact info@astmh.org.

“The perfect platform/
opportunity for
post-docs to be
groomed into
budding scientists.”

~2017 Attendee

HOTEL INFORMATION

Annual Meeting sessions and events will be held at the Sheraton New Orleans and New Orleans Marriott, conveniently located across the street from each other.

Sheraton New Orleans

500 Canal Street
New Orleans, LA 70130

For reservations, call the hotel at +1-504-525-2500. Mention that you are an ASTMH attendee to receive the special conference group rate of \$249 US single/double, plus applicable taxes. A limited number of rooms are available for government employees at the prevailing government rate (ID required at check-in). Discounted rooms are sold on a first-come, first-served basis and apply only to reservations received before October 2, 2018, provided rooms are still available in the room block. Make your reservations now!

[Click here to make an online hotel reservation.](#)

Hotel Parking. Valet parking service is available for guests; self-parking is not available. Vehicles are secured in a covered garage adjacent to the hotel. Due to limited space and height restrictions, parking is available on a first-come, first-served basis and oversized vehicles cannot be accommodated. Overnight guest rate is \$46 US + tax.

New Orleans Marriott

555 Canal Street
New Orleans, LA 70130

For reservations, call the hotel at +1-504-581-1000. Mention that you are an ASTMH attendee to receive the special conference group rate of \$249 US single/double, plus applicable taxes. A limited number of rooms are available for government employees at the prevailing government rate (ID required at check-in). Discounted rooms are sold on a first-come, first-served basis and apply only to reservations received before October 2, 2018, provided rooms are still available in the room block. Make your reservations now!

[Click here to make an online hotel reservation.](#)

Parking

Valet parking fee: \$47.57 US (per night)

ANNUAL MEETING

LOCAL PUBLIC TRANSIT

Travel by Amtrak Train

The Amtrak train stops at the New Orleans Union Passenger Terminal at 1001 Loyola Avenue in New Orleans. To reach the hotel from the train station, exit the main entrance of the station on Loyola Avenue and turn left. Go to Canal Street and turn right. The hotels are located at 500 Canal Street and 555 Canal Street. For information on Amtrak train schedules and ticket fares, visit <http://www.amtrak.com>.

CHILD CARE

Contact the Sheraton New Orleans at +1-504-525-2500 or the New Orleans Marriott at +1-504-581-1000 to inquire about childcare service providers in the New Orleans area.

REQUEST FOR MEETING SPACE

Is your organization interested in holding a meeting during the ASTMH conference? Submit a meeting space request form, located on the Annual Meeting section of the ASTMH website at astmh.org.

UNAUTHORIZED PHOTOGRAPHY

Still and video photography of educational sessions is strictly prohibited. Attendees using cameras in educational sessions without permission will be asked to leave the conference and will not be issued a refund.

EXHIBIT AND SPONSORSHIP INFORMATION

For exhibit and sponsorship information, contact Madhuri Carson, Manager, Partnership Opportunities, at ASTMH, One Parkview Plaza, Suite 800, Oakbrook Terrace, IL 60181 USA; +1-847-686-2362; fax +1-847-686-2253; email mcarson@astmh.org.

Available Late September:

ONLINE SESSION SCHEDULE

Beginning in late September, search the Annual Meeting Online Program Planner at astmh.org. Access information and build an itinerary of sessions you plan to attend. All plenary sessions, scientific sessions, poster sessions, symposia and abstracts will be available for viewing. You can transfer your itinerary to the meeting app when it becomes available in October.

The print Program Book distributed onsite is also available electronically and emailed just prior to the meeting to all pre-registered attendees. Please note that pre-registered attendees who check the print Program Book option during the registration process will receive a print Program Book on site that contains the complete schedule and session information with speakers, presentation titles, abstract titles and authors.

MEETING APP

Approximately one month prior to the Annual Meeting, registered attendees can download the meeting app for easy access to all ASTMH program information. Use the app to view the meeting schedule, session and presenter information, full abstracts, exhibitors, maps and the Twitter feed.



ANNUAL MEETING

IMPORTANT DATES TO REMEMBER!

Early-Bird Discount Registration Deadline:

September 21

Hotel Room Discount on Available Rooms:

October 2

Registration Cancellation Deadline:

September 28

Pre-Registration Discount Registration Deadline:

October 19

Register Onsite:

October 20 – November 1

MARK YOUR CALENDAR!

ASTMH 68th Annual Meeting

November 20-24, 2019 (Wednesday through Sunday)

Gaylord National Resort and Convention Center

National Harbor, Maryland USA (adjacent to Washington, DC)

ASTMH 69th Annual Meeting

November 15-19, 2020 (Sunday through Thursday)

Metro Toronto Convention Centre

Toronto, Ontario, Canada

ASTMH 70th Annual Meeting

November 17-21, 2021 (Wednesday through Sunday)

Gaylord National Resort and Convention Center

National Harbor, Maryland USA (adjacent to Washington, DC)