

ASTMH



AMERICAN SOCIETY OF TROPICAL MEDICINE & HYGIENE
ADVANCING GLOBAL HEALTH SINCE 1903



CLINICAL TROPICAL MEDICINE AND TRAVELERS' HEALTH: Update Course



JUNE 12-13, 2018

*Le Méridien New Orleans
New Orleans, Louisiana USA*

Topics Include:

African Tryps
Chagas Disease
Entomology/Poisonous Animals
Filariasis and Strongyloides
Intestinal Protozoa

Lung Disease
Malaria Pathogenesis and Treatment
Water Disinfection
Schistosomiasis and Flukes
Tropical Dermatology

The ASTMH Clinical Group
(American Committee on Clinical Tropical Medicine and Travelers' Health)


astmh.org



CLINICAL TROPICAL MEDICINE AND TRAVELERS' HEALTH

Update Course

Designed for licensed physicians, nurses, nurse practitioners, physician assistants, veterinarians and other health professionals. Developed and presented by internationally recognized experts in the field of tropical medicine and travelers' health.



“Expert opinion on topics that relate to refugee health.”

-Course Participant 2017

Attend This Meeting if You:

1. Have been working in clinical tropical medicine and travelers' health and want to learn the most up-to-date science in the field.
2. Have been spending some of your professional time in clinical tropical medicine and travelers' health and are interested in obtaining an overview of the field.

Objectives

1. Prepare patients for overseas travel to Low and Low Middle-Income Countries (L/LMIC).
2. Diagnose and treat individuals who have become ill during overseas travel or residence.
3. Diagnose and treat individuals living in the tropics and subtropics who are ill.

Benefit from This Course by:

1. Increasing your knowledge of patients' pre-travel needs.
2. Increasing your knowledge of illness in the returned traveler.
3. Increasing your knowledge of illness in endemic settings.

“Pretty much all the information presented was very much needed and hard to get beyond a text book.”

-Course Participant 2017



The Update Course draws an international audience, including attendees from:

Australia
Canada
Kenya
New Zealand
United Kingdom

Registration Fees

Registration fees are payable to ASTMH in advance and must accompany the registration form. Registration fees include full presentation faculty slides (post course), continental breakfast, Tuesday reception and refreshment breaks. Lunch is on your own. One-day registrants will have access to full presentation faculty slides (post course). Online registration will be available at astmh.org beginning March 15.

	On or before May 8, 2018	On or After May 9, 2018
ASTMH Member	\$ 450	\$ 525
Non-Member	\$ 550	\$ 625
Student/Fellow/Resident	\$ 305	\$ 355
One-Day Registration/ASTMH Member	\$ 340	\$ 420
One-Day Registration/Non-Member	\$ 440	\$ 520

Course Agenda

Tuesday, June 12, 2018

7 a.m. – 8 a.m.

Light Continental Breakfast

8 a.m. – 8:45 a.m.

Chagas Disease and African Tryps

Michael Libman, MD*
*Montreal General Hospital
McGill University
Montreal, Quebec*

8:45 a.m. – 9:30 a.m.

Intestinal Helminths

David Diemert, MD FRCP(C)*
*George Washington University School
of Medicine and Health Sciences
Washington, DC*

9:30 a.m. – 10:15 a.m.

Approach to Intestinal Protozoa

David Diemert, MD FRCP(C)*

10:15 a.m. – 10:30 a.m.

Break

10:30 a.m. – 11:15 a.m.

Filariasis and Strongyloides Infections

Thomas Nutman, MD, FASTMH*
*Laboratory of Parasitic Diseases
National Institutes of Health
Bethesda, MD*

11:15 a.m. – Noon

Emerging Viruses for Non-Virologists

Susan McLellan, MD, MPH, FASTMH*
*University of Texas Medical Branch
Galveston, TX*

Noon – 1:15 p.m.

Lunch (on your own)

1:15 p.m. – 2 p.m.

Malaria Pathogenesis and Treatment

David Diemert, MD FRCP(C)*

2 p.m. – 2:45 p.m.

Water Disinfection

Michael Libman, MD*

2:45 p.m. – 3 p.m.

Break

* ASTMH Member



“Excellent knowledge base of the faculty.”

-Course Participant 2017

Tuesday, June 12, 2018 (cont.)

3 p.m. – 3:45 p.m.

Preparing the Traveler: Clinical Pearls

David O. Freedman, MD, FASTMH*
*University of Alabama Birmingham,
School of Medicine
Birmingham, AL*

3:45 p.m. – 4:30 p.m.

Rickettsial Disease

Lucas Blanton, MD*
*University of Texas Medical Branch
Galveston, TX*

4:30 p.m. – 5:15 p.m.

The Geography of Travel Medicine: Who Gets What Where

David O. Freedman, MD, FASTMH*

5:15 p.m.

Attendee Reception

Wednesday, June 13, 2018

7 a.m. – 8 a.m.

Light Continental Breakfast

8 a.m. – 8:45 a.m.

Tropical Dermatology

Jay Keystone, CM, MD*
*University of Toronto
Toronto, Ontario*

8:45 a.m. – 9:30 a.m.

Approach to Tissue Helminths

John W. Sanders, MD, MPH&TM
FASTMH*
*Wake Forest University
Winston-Salem, NC*

9:30 a.m. – 10:15 a.m.

Schistosomiasis and Flukes

Christina M. Coyle, MD*
*Albert Einstein College of Medicine
Bronx, NY*

10:15 a.m. – 10:30 a.m.

Break

10:30 a.m. – 11:15 a.m.

Approach to Lung Disease in the Tropics

John W. Sanders, MD, MPH&TM,
FASTMH*

11:15 a.m. – Noon

Entomology/Poisonous Animals

LCDR Joseph W. Diclaro II, PhD
*Navy Entomology Center for Excellence
Jacksonville, FL*

Noon – 1:15 p.m.

Lunch (on your own)

1:15 p.m. – 2 p.m.

Approach to CNS Lesions

Christina M. Coyle, MD*

2 p.m. – 2:45 p.m.

Approach to Liver Lesions

Christina M. Coyle, MD*

2:45 p.m. – 3 p.m.

Break

3 p.m. – 3:45 p.m.

Diarrhea in the Tropics

Jay Keystone, CM, MD*

3:45 p.m. – 4:30 p.m.

Leishmania

Michael Libman, MD*

4:30 p.m. – 5 p.m.

Case Based Discussion Around the World

Christina M. Coyle, MD*
Michael Libman, MD*

* ASTMH Member



“The case scenarios were great and the quick review of parasites was very good.”

-Course Participant 2017

Not a member of the Clinical Group?

[Join Here](#)

Not a member of ASTMH?

[Join Here](#)

Faculty Affiliations



Accreditation

ASTMH is accredited by the Accreditation Council for Continuing Medical Education (ACCME) to provide continuing medical education for physicians. ASTMH designates this live educational activity for a maximum of 14.75 AMA PRA Category 1 Credits™. Physicians should claim only the credit commensurate with the extent of their participation in the activity. A record of the credit will be mailed to each registrant after the course.

Physician Assistant Continuing Education Credit

AAPA accepts certificates of participation for educational activities certified for AMA PRA Category 1 Credit™ from organizations accredited by ACCME or a recognized state medical society. Physician assistants may receive a maximum of 14.75 AMA PRA Category 1 Credits™ for completing this program.

Course Organizers



Christina M. Coyle, MD

Christina M. Coyle, MD

Albert Einstein College of Medicine
Member of ASTMH's Clinical Group



Michael Libman, MD

Michael Libman, MD

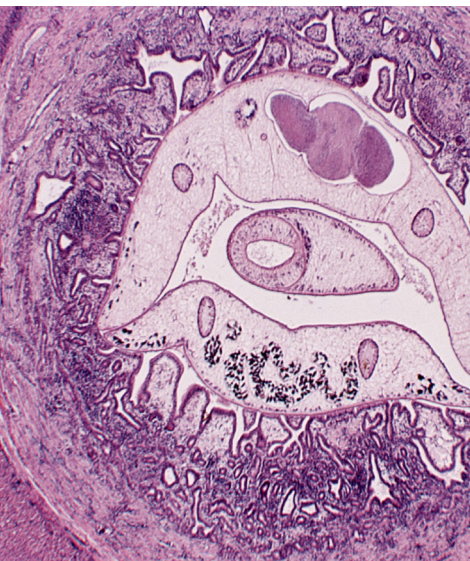
Montreal General Hospital, McGill University
Member of ASTMH's Clinical Group



John W. Sanders, MD, MPH&TM FASTMH

John W. Sanders, MD, MPH&TM FASTMH

Wake Forest University
Member of ASTMH's Clinical Group



Disclosure of Faculty's Commercial Relationships

Consistent with ASTMH policy, faculty are required to disclose any economic or other personal interests that create, or may be perceived as creating, a conflict of interest related to the material discussed. ASTMH resolves personal conflicts of interest. Faculty are required to disclose, at the beginning of their presentation, any product mentioned during their presentation that is not labeled for the use under discussion or is still investigational. This policy is intended to allow participants to form their own judgments about such material.

Course Location and Accommodations—

Le Méridien New Orleans

This course will be held at the Le Méridien New Orleans, 333 Poydras Street, New Orleans, LA 70130. Located across from Harrah's Casino and just steps from the French Quarter, Le Méridien New Orleans is within minutes of popular restaurants, shopping and the Warehouse Arts District.

“I am inspired by how passionate the speakers are about their work.”

-Course Participant 2017

Attendees include leading public and private sector stakeholders in tropical medicine and travelers' health:

Access Alliance	Ottawa Hospital Civic Campus
Albert Einstein College of Medicine	Perth Children's Hospital
Calgary Refugee Clinic	Regional Primary Care Network
Caring Health	Sherbourne Health Center
Family Medicine Residency of Idaho	The Center for Family Medicine
Five Hills Health Region	Toronto General Hospital
Global Health Pathway, Department of Medicine	Transitional Health Clinic for Refugees
Hazleton Family & Community Clinic	Travel Medicine Consultants of Long Island PC
Health Partners	University of Alberta
Hennepin County Medical Center	University of California Los Angeles
Hospital for Sick Children	University of Colorado
Infectious Disease and Travel Clinic	University of Louisville
Infectious Disease Associates, LLP	University of Minnesota School of Medicine
Jackson Hole Travel & Tropical Medicine	University of North Carolina
Jefferson College of Pharmacy	University of Pennsylvania
Libin Cardiovascular Institute	University of Texas Medical Branch
McGill University	University of Toronto
Montreal Children's Hospital	Wake Forest University
Neighborhood Family Practice	York Wellspan Hospital



For More Information

**American Society of
Tropical Medicine and Hygiene**

One Parkview Plaza, Suite 800

Oakbrook Terrace, IL 60181

+1-847-686-2238

Fax +1-847-686-2253

info@astmh.org

astmh.org

Hotel Reservations

The Le Méridien New Orleans will be accepting room reservations until 5 p.m. local time on May 21, 2018. Be sure to state you are with the ASTMH Update Course to be guaranteed your discounted rate of \$159 US single/double double per night plus applicable taxes. You can book your reservation by phone at (866) 961-3321 or you can make your reservation [online](#).

Course Cancellations

Cancellations received in writing by email or fax by May 18, 2018 will be subject to a \$75 cancellation fee. No refunds will be made for cancellations received after May 18, 2018.

Payment

ASTMH accepts VISA, MasterCard, Discover and American Express, and checks made payable to ASTMH in U.S. funds drawn on a U.S. bank. The ASTMH tax identification number is 57-0408245.

MARK YOUR CALENDAR!

October 27-28, 2018

ASTMH Clinical Pre-Meeting Course

**Topic: Leishmaniasis and
Tropical Dermatology**

*Sheraton New Orleans
New Orleans, LA*

This Pre-Meeting Course
immediately
precedes the 2018
Annual Meeting.

333 Poydras Street, New Orleans, Louisiana USA

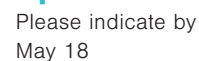
Please print or type.

Emergency Contact Name

****Please circle which day you will attend.**

 \$ 440

 \$ 520



Signature

P.O. Box 88623
Chicago, IL 60680-1618 USA
bfinn@astmh.org